

# Fast. Simple. *Reliable.*

Increase laboratory automation, maximize throughput, and reduce errors with PiSmart cassette printers.



Find it at [fisherhealthcare.com](https://fisherhealthcare.com)



# Consider it guaranteed Peace of Mind.

Because your partner of choice for labeling and tracking should empower you to spend your time meeting patient needs.

## What's included when you choose PiSmart?

- ✓ Four years of StatSwap service coverage<sup>1</sup>
- ✓ Lifetime printhead guarantee<sup>2</sup>
- ✓ Guaranteed LIS compatibility
- ✓ Guaranteed validated consumables
- ✓ Included PathSmart tracking system hub module
- ✓ Ten ribbons for thermal transfer printers



# Why choose PiSmart?

ON YOUR TEAM

PiSmart on-demand thermal transfer cassette printers work as hard as you do to keep patient samples safe and clearly labeled.

An easy-to-use, shared interface makes them ideal to use together in the lab. And excellent connectivity options and simple LIS configuration means they're IT-friendly.

## Unrivaled Experience

StatLab printer-related patents include, but are not limited to:

- ✓ US patent 11794190
- ✓ US patent 8651045
- ✓ US patent 9864888
- ✓ US patent 9636929
- ✓ US patent 10118776

## Fast, Small, and Simple

Cassettes print in 3-5 seconds

Integrated label designer; no additional software needed

Small footprint is ideal for on-demand printing where space is limited

## Built-in Tools for Accuracy and Workflow Automation

Integrated scanners allow scanning of data from a request form or sample barcode

User login and tracking creates traceability for root cause analysis

Intelligent cassette selection prints the right type and number of cassettes based on the protocol selected for each tissue type

Included PathSmart tracking solution connects printers to a hub and delivers reporting data to help close gaps in chain of custody

## Easy LIS Integration and Flexible Connectivity

Connects to any available on-market LIS, guaranteed

Multiple configurations available depending on planned use in your lab

Supported integration by trained, experienced Service and Support Team

## Proven Results<sup>2</sup>

**99.84%**

Jam-Free Printing

**100%**

Barcode Scan Rate





Avoid risks associated with batch printing by using the small, efficient on-demand **PiSmart cassette printer**.

# It's just smart.

Small footprint allows the printer to sit on the grossing bench

Fast, 3-5 second printing time

Superior print quality supports up to 200 characters

Reliable operation reduces potential downtime

Simple LIS connectivity allows labs to use existing interfaces

No separate computer or middleware software needed

## PiSmart Thermal Cassette Printer Kit Specifications

<b>Printer Item Numbers</b>	Six Hopper, 22235666 Single Hopper, 22235667
<b>Kit Description</b>	Includes printer, 4 years of StatSwap service coverage, Lifetime printhead guarantee <sup>2</sup> , Guaranteed LIS compatibility, Guaranteed validated consumables <sup>1</sup> (cassettes), PathSmart tracking system hub module and 10 thermal transfer ribbons - The PiSmart Promise <sup>1</sup>
<b>Dimensions (DxWxH)</b>	Six Hopper, 22.6 x 11 x 15 in (575 x 279 x 381 mm) Single Hopper, 22.6 x 7 x 12.1 in (575 x 177 x 307 mm)
<b>Weight</b>	Six Hopper, 21.6 lbs (9.8 Kg) Single Hopper, 15.4 lbs (7 Kg)
<b>Media Type and Color</b>	Black thermal transfer ribbon
<b>Media Capacity</b>	~12,000 prints per roll
<b>Cassette Capacity</b>	Six Hopper, 240; Single Hopper, 40
<b>Resolution</b>	300 dpi
<b>Barcode</b>	1D and 2D barcode capable
<b>Barcode Capacity</b>	Up to 100 characters
<b>Connectivity</b>	2 x USB A, 1 x USB B and ethernet CAT5
<b>Power Requirements</b>	240/110V power adapter 24V DC
<b>Validated Cassettes</b>	PathFlow PiSmart Thermal Transfer Cassettes

## PathSmart™ Innovative Tracking Solution



Control all of your PiSmart equipment while connecting your processes with the PathSmart tracking solution, transforming your lab to be faster, smarter, and more connected. Designed to close gaps in information, delivering additional information to support chain of custody for samples, the PathSmart hub also links all PiSmart printers to one computer in the lab, syncing user management, templates, software updates and more.



Fully Integrated Barcode Scanner eliminates the need for an external scanner.



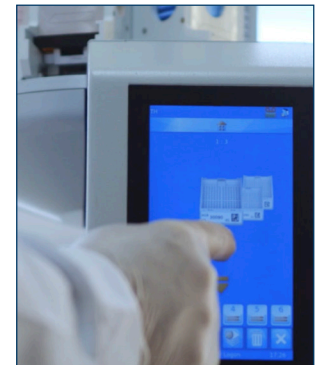
Thermal transfer print quality delivers a durable, high-contrast print, protected during dewaxing by pips on the corners of the cassettes.

### High Resolution Touch Screen Monitor

A high-resolution touch screen display with an intuitive menu structure makes the printer easy to learn and use.

### Label Design Solutions

Built-in label design software allows for easy development and customization of the cassette label's sample information—without the need for additional label software or a separate computer. This includes text, linear barcodes, and 2D barcodes. Simply scan a prefill or requisition barcode or send a text file from the LIS system and the printer does the rest, designing and printing the cassette with unique information to properly identify patient samples. Tech initials can be added to the templates for additional traceability and root cause analysis.



### Fully Integrated Barcode Scanner

A fully integrated barcode scanner automates data entry; a simple scan can log users in and out of the system or create a new cassette label for printing.

### Convenient Cassette Dispenser

Printed cassettes are dispensed via a chute that provides quick retrieval of the cassette. Optional cassette collection systems are available in multiple configurations.

### Small Footprint

The small size of the printer allows it to sit on the grossing bench next to the microtome and water bath. This increases efficiency and accuracy through on-demand printing.

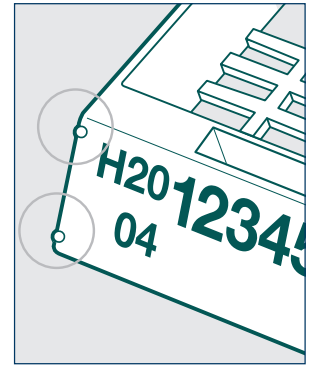
### Flexible Solutions for On-Demand Use

Designed for on-demand printing, PiSmart Single Hopper users have the ability to easily swap hoppers, as well as bypass the hopper and manually drop in a different type of cassette.

# Everything you'll need.

Validated for use with the PiSmart Cassette Printer and manufactured by StatLab, the proprietary design of PiSmart Cassettes ensures print integrity is retained through the entire workflow.

PiSmart Cassettes are engineered specifically for use on the PiSmart printer, utilizing a patented feature to protect the printed surface during dewaxing, while still enabling the surface to be cleared of wax. The cassettes are provided in threaded format, eliminating loading time for more efficiency. A cardboard support thread enables users to quickly load all or part of the stack of cassettes into the hopper.



**2000 PER CASE/2 BOXES OF 1000, THREADED IN STRIPS OF OF 40, LIDS SEPARATE**

## PiSmart Embedding Cassettes

White PiSmart Embedding Cassettes, 2000/case in 2 boxes of 1000	22244029
Green PiSmart Embedding Cassettes, 2000 per case in 2 boxes of 1000	22244028
Gray PiSmart Embedding Cassettes, 2000 per case in 2 boxes of 1000	22244027
Blue PiSmart Embedding Cassettes, 2000 per case in 2 boxes of 1000	22243553
Orange PiSmart Embedding Cassettes, 2000 per case in 2 boxes of 1000	22235696
Pink PiSmart Embedding Cassettes, 2000 per case in 2 boxes of 1000	22235695
Yellow PiSmart Embedding Cassettes, 2000 per case in 2 boxes of 1000	22235694
Tan PiSmart Embedding Cassettes, 2000 per case in 2 boxes of 1000	22235693
Lavender PiSmart Embedding Cassettes, 2000 per case in 2 boxes of 1000	22235692



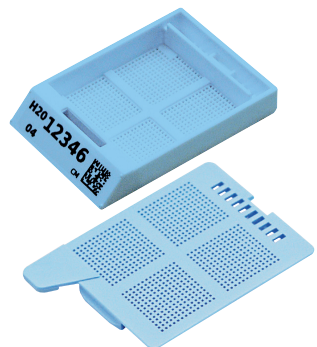
## PiSmart Biopsy Cassettes

White PiSmart Biopsy Cassettes, 2000 per case in 2 boxes of 1000	22235691
Green PiSmart Biopsy Cassettes, 2000 per case in 2 boxes of 1000	22235690
Gray PiSmart Biopsy Cassettes, 2000 per case in 2 boxes of 1000	22235689
Blue PiSmart Biopsy Cassettes, 2000 per case in 2 boxes of 1000	22235688
Orange PiSmart Biopsy Cassettes, 2000 per case in 2 boxes of 1000	22235687
Pink PiSmart Biopsy Cassettes, 2000 per case in 2 boxes of 1000	22235686
Yellow PiSmart Biopsy Cassettes, 2000 per case in 2 boxes of 1000	22235685
Lavender PiSmart Biopsy Cassettes, 2000 per case in 2 boxes of 1000	22235683



## PiSmart Microbiopsy Cassettes

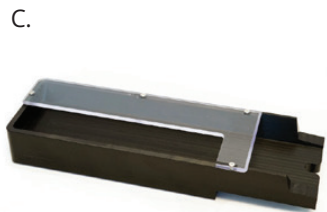
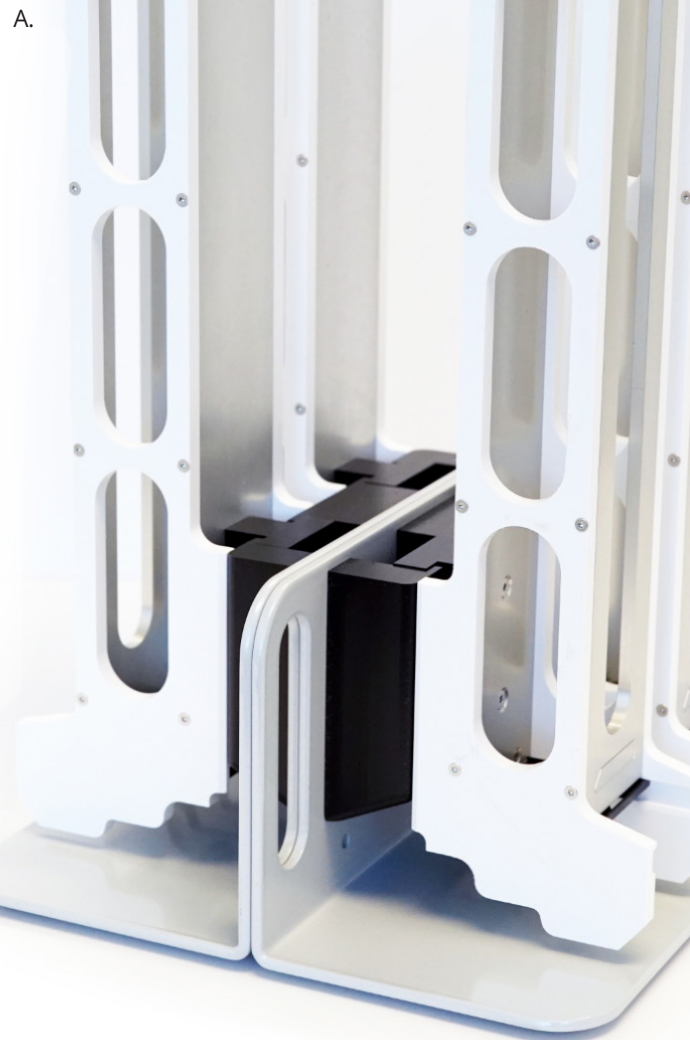
White PiSmart Microbiopsy Cassettes, 2000 per case in 2 boxes of 1000	22235682
Green PiSmart Microbiopsy Cassettes, 2000 per case in 2 boxes of 1000	22235681
Gray PiSmart Microbiopsy Cassettes, 2000 per case in 2 boxes of 1000	22235680
Blue PiSmart Microbiopsy Cassettes, 2000 per case in 2 boxes of 1000	22235679
Orange PiSmart Microbiopsy Cassettes, 2000 per case in 2 boxes of 1000	22235678
Pink PiSmart Microbiopsy Cassettes, 2000 per case in 2 boxes of 1000	22235677
Yellow PiSmart Microbiopsy Cassettes, 2000 per case in 2 boxes of 1000	22235676
Tan PiSmart Microbiopsy Cassettes, 2000 per case in 2 boxes of 1000	22235675
Lavender PiSmart Microbiopsy Cassettes, 2000 per case in 2 boxes of 1000	22235674



Additional hoppers and stands provide ultimate flexibility for the single hopper printer to be used with multiple colors and styles of cassettes.

### PiSmart Cassette Printer Accessories

A. Hopper Stand	22235668
B. On-Printer Hopper Rack (holds 2 hoppers)	22235670
C. Cassette Collection Tray	22235669
D. Additional Hopper (Each)	22235671
E. Thermal Transfer Ribbon (Each)	22235673
Print Head Cleaning Kit, 25/box	22235672
Replacement Power Adaptor (Each)	22235665
Screen Protector (Each)	22235664



Additional collection systems available, please ask your sales representative for details.

# Service and support.

Keep your PiSmart printer protected and your lab running smoothly with StatSwap, included for four years with every printer purchase when ongoing cassettes are included.

## Designed to reduce downtime for busy labs

Once you're covered under StatSwap, you can rest easy if you need help with your printer. You have access to phone support and virtual troubleshooting, and if the problem persists, StatLab will send you a loaner unit overnight to ensure your downtime is kept to a minimum while your printer is returned to StatLab for maintenance.

## Flexible access depending on your preferences

Whether you need a video call for in-depth troubleshooting or have a simple question for an expert, you have access to a team of specialists who can help with anything from settings adjustments to routine maintenance and troubleshooting.

## At your service

The StatLab Equipment Service and Support team ensures your printers run smoothly with as little downtime as possible. This is the team who helps you integrate and install your printers, as well as support any setting changes or troubleshooting you might need post-install. We're on your team.

**50+ years of experience.** You have access to experts with decades of hands-on experience and a deep understanding of laboratory workflow, labeling and tracking solutions, and connectivity options in a variety of environments.

**Trained by the experts.** Every StatLab Service and Support team member is trained by the team who designed the products.

**Nationwide support.** No matter where you are, you have assistance a call or click away. StatLab Application Specialists are ready to address your inquiries, resolve issues, and provide solutions. Benefit from the convenience of effective support in your time zone to meet your needs.

**Dedicated to patient care.** Everything we do at StatLab is to empower you to provide the best possible patient care. We understand the importance of receiving an accurate and timely diagnosis, and we're on your team to ensure your lab experiences as little downtime as possible so you can spend your time on patient care, not printer care.

## High Quality StatLab Manufacturing

Expert, innovative development paired with high quality components and assembly deliver reliable, consistent products that we proudly stand behind.

All PiSmart printers are manufactured in a StatLab ISO-9001 certified facility in Polegate, England.

## Contact StatLab Equipment Service and Support

**7AM to 7PM CST Monday to Friday**

- 📞 1-855-STAT-HELP
- 📧 EquipmentSupport@StatLab.com



## StatSwap

Receive a loaner PiSmart to replace your PiSmart if needed after virtual troubleshooting.



## Email Support

Remote troubleshooting provides solutions to common problems.



## Service Desk

Quick virtual help via phone or screenshare with a StatLab technician.

<sup>1</sup>Four-Years of StatSwap Service - PiSmart Promise - requires the use of PiSmart Validated Cassettes on PiSmart Printers  
<sup>2</sup>Lifetime defined as 5 years.

Distributed by Fisher Healthcare. Contact us today:

**In the United States**

Order online: [fisherhealthcare.com](https://fisherhealthcare.com)

Call customer service: 1-800-640-0640