

**KIMTECH™**

# SEAMLESS PROTECTION

For Your Most Critical Environments

—  
Scientific Products  
and Solutions



Find it at [fishersci.com](https://fishersci.com) and [fishersci.ca](https://fishersci.ca)

 **fisher scientific**  
part of Thermo Fisher Scientific

# KIMTECH™

## 1 OUR SOLUTIONS

---

- 3 Kimtech™ Brand
- 4 Are You Dressed For Success?™
- 8 The RightCycle™ Program
- 10 APEX

## 12 PROTECTIVE APPAREL

---

- 16 Kimtech™ Sterile Cleanroom Apparel
- 18 Kimtech™ Non-Sterile Cleanroom Apparel
- 28 KleenGuard™ General Purpose Apparel

## 30 GLOVES

---

- 34 Kimtech™ Sterile Cleanroom Gloves
- 36 Kimtech™ Non-Sterile Cleanroom Gloves
- 40 Kimtech™ Exam Gloves
- 43 KleenGuard™ Gloves

## 44 FACIAL PROTECTION

---

- 48 Kimtech™ Sterile Cleanroom Masks
- 49 Kimtech™ Non-Sterile Cleanroom Masks
- 51 Kimtech™ Veils and Face Shield
- 52 Kimtech™ N95 Respirators

## 54 WIPERS

---

- 57 Kimtech™ Wipers
- 62 WypAll® Wipers
- 66 Technology descriptions
- 66 Chemical compatibility
- 67 Sustainability

## 68 EYEWEAR

---

- 71 KleenGuard™ Safety Glasses
- 76 KleenGuard™ Goggles



# Protection: FOR PEOPLE AND PROCESSES

Kimberly-Clark Professional understands the challenges you face in protecting your process from contamination and your people from harm. We also understand how you strive to maintain the highest laboratory and cleanroom standards while meeting your sustainability goals. We have solutions that can minimize contamination and risk while increasing productivity and reducing waste. Let us show you how.





## Protection: WHEN AND WHERE IT COUNTS

When it comes to protection, you can't cut corners. You need reliable, trusted solutions that will deliver the highest level of assurance — seamlessly.

Kimtech™ Brand solutions provide sterile and clean-processed apparel options that will close the gaps in contamination, effectively and efficiently, while delivering comfort to your employees. And that's not all. The Kimtech™ Brand offers innovative gowning technologies, sterile and non-sterile glove products and task-engineered wipers that deliver precision performance for all your lab and cleanroom needs.

**Scientifically proven. Intuitively designed. Reliable.**

For protection against known and unknown risks, put your trust in the **Kimtech™** Brand.

**KIMTECH™**



If your garments  
are compromised,  
your process  
could be too.

ARE YOU  
DRESSED FOR  
SUCCESS?™



## Contamination is a people problem

To avoid cleanroom contamination, we have to look at its source: PEOPLE. They are the largest contributor.

What stands between you and the risk of contamination? Your choice of garment.

Selecting the right garment can reduce the contamination risk dramatically.

## The good news: WE MAKE IT SIMPLE

Being **Dressed For Success™** means choosing a garment that can control contamination and gives you the assurance to do your best work.

Contamination is bad for business, especially for an industry where purity is paramount.

Before you get dressed, turn to the experts in sterile garments — **Kimtech™ Sterile Single-Use Apparel** for seamless protection when and where it counts.



There are big differences between Kimtech™ Sterile Single-Use Apparel and laundered garments:

› SINGLE-USE GARMENTS

Kimtech™ Sterile Single-Use Garments are engineered to reduce contamination risk, offering significantly higher bacterial filtration efficiency (BFE) ratings than laundered reusable apparel. And they're sterile every time — **guaranteed.**



Bacterial filtration efficiency (BFE)



Strong barrier for fine particles and liquids

› LAUNDERED GARMENTS

Laundered garments typically contain a single layer of woven polyester-blend fabric, which may degrade after multiple laundering and sterilization cycles — leading to BFE declines of more than 25% after an average of five washes.<sup>1</sup>



Bacterial filtration efficiency (BFE)



Fabric degradation at the submicron level — enough to allow bacteria to penetrate

For more information, visit [www.KCProfessional.com](http://www.KCProfessional.com)

<sup>1</sup> Kimberly-Clark Test Study

HERE'S WHAT SUCCESS LOOKS LIKE

Our garments close the gaps in contamination and offer cloth-like comfort through a 100% polypropylene breathable SMS (Spunbond Meltblown Spunbond) fabric.

Plus:

Recyclable via The RightCycle™ Program

Divert these previously hard-to-recycle items from your waste stream



CONTAMINATION CONTROL FEATURES:

Advanced Clean-Don™ Technology

Lowers contamination risk and makes sterile donning easier — minimizing the chances of workers touching the outside of garments or garments touching the floor

Each Garment Sealed in Multi-Layer Packaging

To guarantee sterility

Secure Fit to Reduce the Risk of Particles Escaping

And a gap guard for additional protection

Snap Technology on Arms and Legs

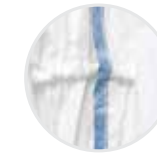
Built-in snaps automatically release as the garment is put on — lowering the risk of it touching the floor

Inside-Out Fold

Visible blue line along the inside of the garment signals the proper place to hold while gowning and helps workers avoid touching the outside of the garment

Built-in Thumb Loops

Keep garment sleeves from rolling back and exposing the arm or wrist



Contain submicron particles from head to toe with seamless protection and comfort for ISO 5 or higher cleanrooms.

ISO 5 GRADE A

Sterile filtration, filling and stoppering, lyophilization

- Kimtech™ A5 Cleanroom Apparel, clean processed with Clean-Don™ Technology (see pages 16-17)
- Kimtech™ M3-M5 Cleanroom Face Masks (see pages 48-50)
- Kimtech™ G3 White Nitrile Gloves and Kimtech™ G3 Latex† Gloves (see pages 34 and 36)

ISO 6 GRADE B

Activities in areas directly surrounding Grade A zone

- Kimtech™ A6 Liquid Splash Protection Coverall with Hood (see page 20)
- Kimtech™ M3-M6 Cleanroom Face Masks (see pages 48-50)
- Kimtech™ G3 White Nitrile Gloves and Kimtech™ G3 Latex† Gloves (see pages 32-33)

ISO 7 GRADE C

Drug compounding, compression, coating

- Kimtech™ A7 Certified Liquid Barrier Gown (see page 21)
- Kimtech™ M7 Veils (see page 51)
- Kimtech™ G3 NXT™ Nitrile Gloves (see page 34)

ISO 8 GRADE D

Material staging, labeling and packaging, laboratory

- Kimtech™ A8 Cleanroom Apparel (see pages 23-26)
- Kimtech™ G3 NXT™ Nitrile Gloves (see page 34)

† CAUTION: This product contains natural rubber latex which may cause allergic reactions.



# What is THE RIGHTCYCLE™ PROGRAM by Kimberly-Clark Professional?

Sustainability matters to you and to us. That's why we created The RightCycle™ Program, the first large-scale recycling program for non-hazardous lab, cleanroom and industrial waste. Since 2011, we've helped hundreds of customers divert more than 3.7 million pounds of waste. We can do the same for you by turning your used single-use apparel, gloves, respirators and safety eyewear into patio furniture and other useful products.

At Kimberly-Clark Professional, we're always working to reduce the environmental impact of our products. Reducing our dependence on the world's natural resources, leaves more for the future — for our children, for the planet and for our businesses. We strive to help customers like you reach your zero waste-to-landfill goals. The RightCycle™ Program is part of this commitment and one very important way for us to work together, one ton of waste at a time.

*"For me, the biggest appeal about The RightCycle™ Program is that it's the start of an EPR, an Extended Producer Responsibility, for a material that we don't often think about. Gloves are a high-volume, fast-moving commodity used by almost every industry. Once people start getting good at recycling primary commodities, such as paper and plastic, we're going to have to move to secondary commodities. Gloves bring you to that next level."*

*— Shantanu Pai  
Assistant Sustainability Researcher,  
Illinois Sustainable Technology  
Center (ISTC)*



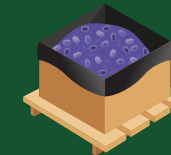
By Kimberly-Clark Professional®

Giving Single-Use Apparel, Gloves, Respirators and Safety Eyewear a New Life.

3.7 million pounds & counting waste diverted since 2011



Apparel items, eyewear, respirators and nitrile gloves are worn in your facility.



Used products are collected and shipped to our recycling centers.




Used products are sorted and processed into plastic pellets.



Materials are molded into new plastic products and durable goods.

For more information, visit:  
**The RightCycle™ Program | Kimberly-Clark Professional (KCProfessional.com)**

 Look for this symbol to see which products are eligible for recycling





## APEX MAKES IT HAPPEN

When you're transitioning to a new brand of products, you want the changeover to be seamless and worry-free. That's where APEX comes in. It's our promise to you to make the conversion to Kimtech™ Brand products as successful as possible.

APEX is a complimentary training program that effectively engages employees, ensuring protection of the scientific process while enhancing efficiency and performance. Expert consultants work with employees on everything from aseptic technique and best practices to standard operating procedures (SOP) review and physical gown and glove training.

APEX is an essential component of our solutions and another example of what makes Kimberly-Clark Professional so exceptional.

*"APEX is invaluable. It helps with 'big change' for customers."*

*— Kimberly-Clark  
Professional distributor*

**Apex** 



## PROTECTIVE APPAREL

Kimtech™ Brand apparel provides seamless protection when and where it matters most — closing the gaps in your protection. As a global leader in lab and cleanroom personal protective equipment (PPE), Kimberly-Clark Professional products work together to enhance comfort, compliance and productivity.





**FIND YOUR FIT**

What type of apparel suits you best? These easy-to-use selection charts will help you choose the right products for your workers and your environment.

Category	ISO**	Ideal for	Suggested use	Performance		
				Best	Better	Good
A5	Sterile		Compounding, Mixing, Filling, Cleaning	●		
A5	Non-Sterile	Cleanroom environments ISO Class 5 Aseptic Cleanroom GRADE A (Former FED-STD-209E; Class 100) ISO Class 6, 7, 8 Bioburden control areas GRADE B/C/D (Former FED-STD-209E; Class 1,000, 10,000, 100,000)	Non-Sterile Compounding, Mixing, Filling, Cleaning	●		
A6	Non-Sterile	Cleanroom environments ISO Class 6, 7, 8 Bioburden control areas GRADE B/C/D (Former FED-STD-209E; Class 1,000, 10,000, 100,000)	Non-Sterile Pharmaceutical Manufacturing, Bio-Medical Research, Pharmaceutical Compounding, Biotechnology		●	
A7	Non-Sterile	Cleanroom environments ISO Class 7, 8 Bioburden control areas GRADE B/C/D (Former FED-STD-209E; Class 1,000, 10,000, 100,000)	Non-Sterile Laboratory, Testing, Compounding Preparation Areas		●	
A8	Non-Sterile	Cleanroom environments ISO Class 8 Bioburden control areas GRADE B/C/D (Former FED-STD-209E; Class 1,000, 10,000, 100,000)	Packaging and Distribution Areas, Non-Sterile Production			●

Minimal gowning requirements	Buffant Cap	Hood	Beard Cover	Face Mask	Lab Coat/ Gown	Coverall	Shoe Cover	Boots	Gloves	Safety Glasses	Goggles
ISO Class 5 (Class 100)	●	●	●	●		●	●	●	●		●
ISO Class 6 (Class 1,000)	●	●	●	●		●	●	●	●		●
ISO Class 7 (Class 10,000)	●		●	●	●	●	●		●	●	
ISO Class 8 (Class 100,000)	●		●		●	●	●		●	●	

Cleanroom classifications		
ISO Class	ISO Class limits <sup>2</sup>	FS209 Class limits <sup>3</sup>
ISO 3	35	1
ISO 4	352	10
ISO 5	3,520	100
ISO 6	35,200	1,000
ISO 7	352,000	10,000
ISO 8	3,520,000	100,000
ISO 9	35,200,000	—

**SYMBOLS KEY**

- Sterile
- Recommended for ISO Class 5 or higher cleanroom
- Recommended for ISO Class 6, 7, 8 or higher cleanroom
- Recommended for ISO Class 7, 8 or higher cleanroom
- Recommended for ISO Class 8 or higher cleanroom
- Look for this symbol to see which products are eligible for recycling

\*\* ISO compatibility is dependent on the equipment capabilities within your cleanroom.  
<sup>2</sup> (particles / m<sup>3</sup> of air) for particles equal to and larger than 0.5 microns  
<sup>3</sup> (particles / ft<sup>3</sup> of air) for particles equal to and larger than 0.5 microns

## A5 Sterile Cleanroom Apparel



Clean Processed with Clean-Don™ Technology

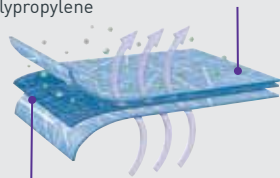
### PRODUCT FEATURES

- **Highly visible blue line** along the inside of the garment signals the proper place to grasp while gowning, helping workers to avoid touching the outside of the garment
- **Cloth-like comfort** is delivered by the SMS (Spunbond Meltblown Spunbond) material
- **Built-in thumb loops** keep garment sleeves from rolling back and exposing arm or wrist
- **Innovative inside-out fold** pattern presents the inside of the garment as the package is opened, reducing the risk of touching and contaminating the outside of the coverall
- **Patented telescoped arms and legs with snap technology** feature built-in snaps that gather up legs and arms to lower the risk of touching the floor, then automatically release as garment is put on
- **Vacuum-packaged** for sterility integrity and odor control (sterile apparel)



### KIMTECH™ APPAREL SMS FABRIC

**Outer Layers** – Cloth-like, yet tough and abrasion-resistant spunbond polypropylene



**Middle Layers** – Intricate web of microfibers that filter out many water-based liquids and dry particulates

### TYPICAL USES

ISO 5-8 Cleanroom Environments

- Compounding
- Mixing
- Filling
- Cleaning

### A5 Sterile Integrated Hoods

- Oval head design to accommodate different hairstyles and head shapes
- Optimized viewing to limit skin exposure around forehead and cheeks
- Integrated hood and mask to close gaps in protection

### A5 Sterile Elasticized Hoods

- Stretch fit elastic hood and opening
- Tunneled overseams to prevent particle shedding
- Clean-Don™ Technology ties for easy donning and a more secure fit

### A5 Sterile Boot Covers

- Side grasp ties for secure fit
- Vinyl edge to reduce slipping and liquid penetration
- 3 sizes available (S/M, L/XL, Universal)

### A5 Sterile Sleeve Protectors

- Blue-line donning signal feature
- Thumb loops keep sleeves from rolling back and exposing arm or wrist



### Coverall

Description	Color	S	M	L	XL	2XL	3XL	4XL	5XL	6XL-8XL	Total/Case
Sterile Coverall	White	88800	88801	88802	88803	88804	88805	88806	12917	12914	25



### Hood

Description	Color	Universal	XL	Total/Case
Integrated Hood and Mask, Sterile	White	36072	47677	75
Hood with Ties, Sterile	White	25797	—	100
Elasticized Hood, Sterile	White	40616	—	100
Hood, Sterile	White	88807	—	100



### Sleeve Protector

Description	Color	18" Length	Total/Case
Sleeve Protector, Sterile	White	36077	200



### Boots

Description	Color	S/M	Universal	L/XL	Total/Case
Boots w/ Grasp Ties and Vinyl Edge, Sterile	White	31683	31696	31697	100 Pairs
Boots, w/ Ties, Vinyl, Sterile	White	12922	88808	12920	100 Pairs



## A4 Sleeve Protectors

### PRODUCT FEATURES

- Blue-line donning signal feature
- Thumb loops keep sleeves from rolling back and exposing arm or wrist

Code	Description	Size	Total/Case
49815	Sleeve Protector	18"	200
49816	Sleeve Protector	21"	200



## A5 Cleanroom Apparel

Clean Processed with Clean-Don™ Technology



### PRODUCT FEATURES

- **Cloth-like comfort** is delivered by the SMS (Spunbond Meltblown Spunbond) material
- **High neck collar** to control contamination risk
- **Elastic waist band** for a proper fit
- **Built-in thumb loops** keep garment sleeves from rolling back and exposing arm or wrist
- **Nine sizes available** (Small-8XL)
- **Individual and bulk pack options**



### A5 Integrated Hood & Mask

- Oval head design to accommodate different hairstyles and head shapes
- Optimized viewing to limit skin exposure around forehead and cheeks
- Integrated hood and mask to close gaps in protection

### A5 Boot Covers

- Ties for secure fit
- Vinyl sole



### Coverall

	Color	S	M	L	XL	2XL	3XL	4XL	5XL	6XL-8XL	Total/Case
Individually Packed Code	White	88842	88843	88844	88845	88846	88847	88848	12916	12915	25
Bulk Packed Code	White	49831	49832	49833	49834	49835	49836	49837	49838	49841	25



### Hood

	Description	Color	Universal	Total/Case
Bulk Packed Code	Integrated Hood and Mask	White	49828	75
Individually Packed Code	Hood with Ties	White	25796	100
Individually Packed Code	Hood	White	88849	100



### Boots

Description	Color	S/M	Universal	L/XL	Total/Case
Boots with Ties	White	12921	88850	12919	200



## A6 Liquid Splash Protection Coverall with Hood



### PRODUCT FEATURES

- High-performance laminated film for the front panel, hood, arms and legs
- Lightweight, breathable material for the back panel to keep workers safe and cool
- Suitable for ISO 6, 7 and 8/Grade C & D cleanrooms
- Built-in thumb loops and elastic cuffs
- Innovative origami-inspired fold design to reduce gowning time
- Low lint, Category II, Helmke Drum Test
- Individually packed

### APPLICATIONS

- Non-Sterile Pharmaceutical Manufacturing
- Bio-Medical Research
- Pharmaceutical Compounding
- Biotechnology



	Description	Color	S	M	L	XL	2XL	3XL	4XL	Total/Case
Individually Packed	Coverall	White	47681	47682	47683	47684	47685	47686	47687	25

## A7 Liquid Barrier Gown



### PRODUCT FEATURES

- Seamless front and closed back
- Enhanced liquid barrier protection — fabric tested per ASTM F1670, F1671 and F739-12 for permeation of chemotherapy drugs and hormones
- Easy don-and-doff design to reduce contamination risk and prevent chemicals from getting on clothing or skin
- Thumb loops to maintain glove and garment interface
- Low lint to minimize contamination
- Meets USP <800> guidelines by providing seamless protection against hazardous drugs

Description	Color	S/M	L/XL	2XL	Gowns/Bag	Bags/Case
Seamless front, closed back	Blue	47992	47993	47994	10	10



## A7 Cleanroom Lab Coat



### PRODUCT FEATURES

- Advanced barrier fabric for better liquid and dry particle protection
- Thumb loops to maintain glove and garment interface
- Low lint to reduce contamination risk

High mandarin collar to reduce the risk of contamination

Front snaps for a secure closure

Elastic wrist and thumb loops for full wrist coverage



	Description	Color	S	M	L	XL	2XL	4XL	6XL	Total/Case
Bulk Packed Code	Lab Coat with Thumb Loops	White	47651	47652	47653	47654	47655	47656	47657	30



## A7 Ankle High Shoe Covers



### PRODUCT FEATURES

- 30% more material is added to cover the ankle (vs. a standard shoe cover)
- Features two elastic bands above and below the ankle for enhanced coverage and fit
- Durable anti-skid soles for a better grip
- Thread color helps to identify size

Two elastic bands above and below the ankle for enhanced fit and coverage

30% more material added to cover the ankle vs. a standard shoe cover

Durable anti-skid soles for better grip



Key features have been highlighted for illustration purposes only.

### A7 Shoe Covers

	Description	Thread Color	Universal	XL	Total/Case
Bulk Packed Code	Ankle-High Shoe Cover with durable sole	White	47972	—	300
Bulk Packed Code	Ankle-High Shoe Cover with durable sole	Black	—	47973	300

## A8 Shoe Covers with Unitrax



### PRODUCT FEATURES

- Dry particle and fluid protection
- Extra grip
- Low linting
- Packed for cleanroom



Description	Color	S/M	Universal	XL	Eaches/Bags	Total/Case
Shoe Cover w/seamless bottom	White	39370	39371	39372	100/3	300

## A8 Shoe Covers with Traction Strips



### PRODUCT FEATURES

- Light splash protection
- Interior has cloth-like feel against the skin

Adhesive traction strips to help prevent slips



Description	Color	Universal	XL	Eaches/Carton	Total/Case
Shoe Cover, Ankle Height	Blue	69252	—	100/3	300
Shoe Cover, Ankle Height	Blue	—	69254	80/3	240
Ankle High, Mid-Calf	Blue	69253	69353	100/3	300

## A20 KleenGuard™ Shoe Cover

### PRODUCT FEATURES

- Double-bagged for cleanroom use
- Light blue color
- Fully elasticized
- NPFA 99 Compliant Antistatic material



	Description	Thread Color	Universal	Total/Case
Bulk Packed Code	Shoe Cover	White	66857	300

**A8 Cleanroom Apparel**



**PRODUCT FEATURES**

- A comfortable, lightweight innovative fabric that moves with the worker
- Built-in thumb loops to protect people and processes
- High neck collar to control contamination risk
- Double bagged, packed for cleanroom

**APPLICATIONS**

- Non-Sterile Pharmaceutical Manufacturing
- Bio-Medical Research
- Pharmaceutical Compounding
- Biotechnology



Description	Color	S	M	L	XL	2XL	3XL	4XL	Total/Case	
Bulk Packed Code	Coverall	White	47951	47952	47953	47954	47955	47956	47957	25

**A8 Lab Coats & Jackets**

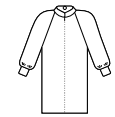


**PRODUCT FEATURES**

- Light fluid protection
- Protective 3-layer SMS fabric
- All coats and jackets feature soft knitted cuffs
- Available with extra protection fabric with blood strikethrough resistance

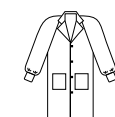
**LAB COAT SELECTION**

Select based on collar and style preference. All are for light fluid protection. For heavier fluid protection select A7 lab coats.



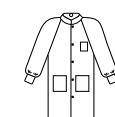
**A8 Zippered Lab Coat — mid-calf length**

	Color	Collar Type	S	M	L	XL	2XL	3XL/4XL	5XL/6XL	Total/Case
Bulk Packed Code	White	Mandarin	51931	51932	51933	51934	51935	51936	51937	25 (3XL+ = 20)



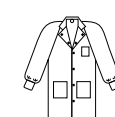
**A8 Lab Coat — mid-calf length**

	Color	Collar Type	Reinforced Pockets/Snaps	S	M	L	XL	2XL	3XL/4XL	Total/Case
Bulk Packed Code	White	Traditional	2/4	10120	10121	10122	10123	10124	—	25



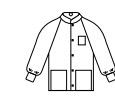
**A8 Lab Coat — mid-calf length**

Bulk Packed Code	Blue	Knit	3/5	10030	10031	10032	10033	10034	51905	25 (3XL+ = 20)
Bulk Packed Code	White	Knit	3/5	10020	10021	10022	10023	10024	—	25



**A8 Lab Coat + Extra Protection — mid-calf length**

Bulk Packed Code	Blue	Traditional	3/6	10045	10046	10047	10048	10049	—	25 (2XL = 10)
Bulk Packed Code	White	Traditional	3/6	10040	10041	10042	10043	10044	—	25 (2XL = 10)



**A8 Lab Jacket + Extra Protection — hip length**

Bulk Packed Code	White	Knit	3/5	10069	10071	10072	10073	—	—	25
------------------	-------	------	-----	-------	-------	-------	-------	---	---	----





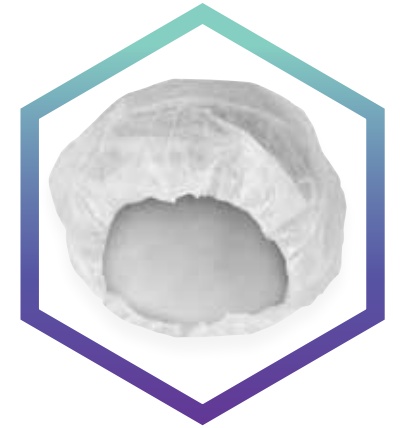
## KleenGuard™ Bouffant Caps

### ▶ PRODUCT FEATURES

- Dry particle protection
- Spunbond
- Non-latex elastic
- White

### A10 Bouffant Caps

Code	Description	Color	Size	Case Count
36850	Bouffant Cap (Packed for cleanroom)	White	M (21")	1000 ea/cs; 10 packs/100
36860	Bouffant Cap (Packed for cleanroom)	White	L (24")	1000 ea/cs; 10 packs/100
36900	Bouffant Cap	White	M (21")	600 ea/cs; 3 packs/200
36920	Bouffant Cap	White	L (24")	450 ea/cs; 3 packs/150



### ▶ PRODUCT FEATURES

- Rayon, ideal for cleanroom
- Not made with natural rubber

### A20 Cleanroom packaging (double-bagged)

Code	Description	Color	Size	Case Count
66829	Bouffant Cap	White	L (24")	5 bags of 100

## KleenGuard™ A10 Beard Cover

### ▶ PRODUCT FEATURES

- Lightweight spunbond material
- Elasticized ear loops
- Not made with natural rubber latex

Description	Color	S/M	Universal	XL	Eaches/Bags	Total/Case
Beard Cover	White		66815	66816		1000





## KleenGuard™ A70 Chemical Spray Protection Smock & Apron

### PRODUCT FEATURES

#### A70 Smock

- Bound seams and neck
- Elastic wrist and shoulder for proper fit
- Back neck snaps

#### A70 Apron

- Bound seams
- Bound neck and ties
- One size fits all



#### Smock

Code	Description	Color	Size	Total/Case
09829	Smock – Back Opening	Yellow	44"	25
09830	Smock – Back Opening	Yellow	52"	25



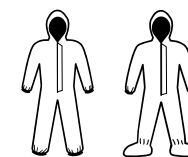
#### Apron

97790	Apron	Yellow	29" x 44"	100
-------	-------	--------	-----------	-----

## KleenGuard™ A80 Chemical Protection Coveralls

### PRODUCT FEATURES

- Made of Saranex® 23-P Film laminated to a durable fabric which provides a soft cloth-like feel against the skin
- Taped, sealable storm flap and taped seams
- Seamless front provides more protection in the primary exposure area
- Patented Reflex® Design is 7-1/2 times less likely to rip out than ANSI minimums — provides 12% more chest room and 6% longer body length



	Color	L	XL	2XL	3XL	4XL	5XL (MTO)	6XL (MTO)	Case Count
Zipper Front, Storm Flap, Elastic Wrists, Ankles & Respirator-Fit Hood	White	45643	45644	45645	45646	45647	30946	30947	12 (3XL+ = 10)
Zipper Front, Storm Flap, Elastic Wrists, Ankles, Respirator-Fit Hood & Boots	White	45663	45664	45665	45666	45667	30948	30949	12 (3XL+ = 10)

MTO = Made to Order















## GLOVES

Kimtech™ Brand gloves protect your process and your employees from known and unknown risks while delivering comfort, dexterity, quality and the assurance to do your best work. They work hand in hand with other head-to-toe solutions from Kimberly-Clark Professional — the global leader in lab and cleanroom PPE and wiping products.

## Which Glove Is Right for You?

Choose from a wide variety of cleanroom and laboratory glove offerings including a true original: our Purple Nitrile™ Exam Glove, *the glove of choice in labs and the most recognizable glove in the market.*

### CLEANROOM & EXAM GLOVE SELECTION GUIDE







Category	Suggested Use	Performance		
		Best	Better	Good
<b>Sterile Gloves</b>				
<b>G3 White Nitrile</b> 	Parenteral drug manufacturing; Ophthalmic manufacturing; Biotech; Aseptic processing	●		
<b>G3 Latex†</b> 	Parenteral drug manufacturing; Ophthalmic manufacturing; Biotech; Aseptic processing	●		
<b>G3 Sterling™ Nitrile</b> 	Parenteral drug manufacturing; Ophthalmic manufacturing; Biotech; Aseptic processing		●	
<b>Non-Sterile Gloves</b>				
<b>G3 White Nitrile</b> 	Pharmaceutical; Biotech; Semiconductor; Medical device; Electronics	●		
<b>G3 Sapphire Nitrile</b> 	Coming Soon			
<b>G3 NXT™ Nitrile</b> 	Pharmaceutical; Biotech; Semiconductor; Applications where double donning is necessary	●		
<b>G3 Latex†</b> 	Pharmaceutical; Biotech; Semiconductor; Medical device; Disk drive; Data storage	●		
<b>G3 EvT Prime Nitrile</b> 	Pharmaceutical; Biotech; Semiconductor; Medical device; Disk drive; Data storage		●	
<b>G5 Comfort Latex†</b> 	Coming Soon			
<b>G5 Vinyl Co-Polymer</b> 	Semiconductor; Medical device; Disk drive; Data storage; Electronics			●
<b>Exam Gloves</b>				
<b>Purple Nitrile™ and Purple Nitrile-Xtra™</b>	High-risk applications within life sciences: Pharmaceutical & Biomedical research; Forensic science; Non-sterile drug manufacturing; Hazardous drug compounding; Chemotherapy; EMS, Petrochemical; Chemical processing; Electronics; BSL 1 & 2 lab research	●		
<b>Sterling™ Nitrile</b>	For general laboratory use in life sciences; University labs; Medical device; Forensic science; Chemical processing; Petrochemical; Food processing; Janitorial		●	
<b>Vista</b>	For general laboratory use in life sciences, university labs, medical device, forensic science, chemical processing, petrochemical, food processing, janitorial.		●	
<b>Element</b>	For use in lower-risk laboratory applications: life sciences, university labs, medical device, forensic science, chemical processing, petrochemical, food processing, janitorial.			●

Protection level ↑

Protection level ↑

Protection level ↑

#### SYMBOLS KEY

-  Sterile
-  Acceptable quality level
-  Double bagged with case liner
-  Recommended for ISO Class 3 or higher cleanroom
-  Recommended for ISO Class 5 or higher cleanroom
-  Look for this symbol to see which products are eligible for recycling

† **CAUTION:** This product contains natural rubber latex which may cause allergic reactions.

### Advantages of Kimtech™ Gloves



#### Acceptable Quality Level (AQL)

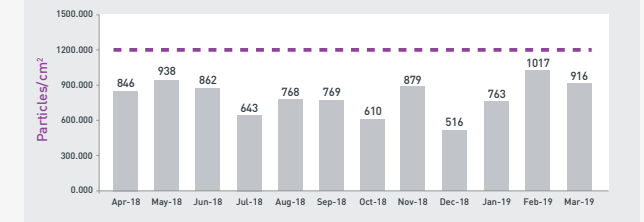
- Refers to the probability of having defective gloves within a lot
- The lower the AQL number, the lower the probability of defective gloves
- Kimtech™ Gloves exceed ASTM standards for freedom from pinholes and critical defects (*ASTM = AQL 2.5; Kimtech™ Gloves = AQL 1.5 or better*)
- A low AQL for pinholes is important — the lower the number of pinholes, the greater the level of barrier protection

Example based on historical Critical Nitrile Data

#### The Importance of Trend & Technical Data†††

- Demonstrate consistent product quality over time
- Trend data indicating particle counts and extractable levels are available for all Kimtech™ G3 Latex† and Nitrile Gloves

Kimtech™ Pure G3, Sterile Sterling Nitrile Gloves, Hand Specific (Product Code 97) Monthly Particles (Apr 2018-Mar 2019)



■ Particles ■ Specification



††† Tested according to the procedure as described in IEST-RP-CC005.3: Gloves and Finger Cots Used in Cleanrooms and Other Controlled Environments

† **CAUTION:** This product contains natural rubber latex which may cause allergic reactions.

➔ Go to [www.KCProfessional.com](http://www.KCProfessional.com) for detailed trend & technical data



### G3 Sterile White Nitrile Gloves



Highest personal and process protection in the sterile range

#### PRODUCT FEATURES

- Gamma sterilized (10<sup>-6</sup>)
- Packaged for aseptic donning (walleted and pouched in polyethylene)
- Suitable for double donning
- Low endotoxins: typical <5, max ≤20 EU/glove
- Tested for use with chemotherapy drugs, per ASTM D6978-05
- Meets USP <800> guidelines
- Meets FDA food contact requirements set forth in 21 CFR 177.2600 and Canada food handling requirements as per the Canada Food and Drugs Act and Regulations
- Particles: typical 700, max ≤950 at >0.5 um/cm<sup>2</sup>
- Not made with natural rubber latex
- Textured fingertips with beaded cuff for easy donning
- Hand-specific pairs
- Static dissipative in use



Packaged in a Class 100 Cleanroom

Description	Color	6.0	6.5	7.0	7.5	8.0	8.5	9.0	10.0	Gloves/Bag	Total/Case
Sterile White Nitrile Gloves, 12" Hand-Specific Pairs	White	56888	56889	56890	56891	56892	56893	56894	56887	20/10	200 pairs

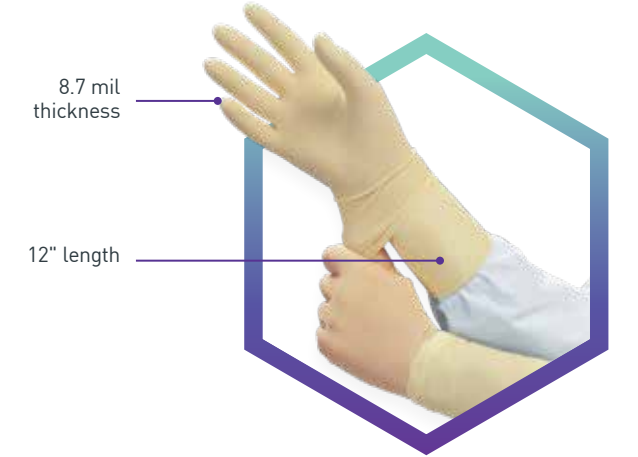
### G3 Sterile Latex<sup>+</sup> Gloves



High-quality latex<sup>+</sup> gloves with good comfort and dexterity

#### PRODUCT FEATURES

- Gamma sterilized (10<sup>-6</sup>)
- Packaged for aseptic donning (walleted and pouched in polyethylene)
- Suitable for double donning
- Low endotoxins: typical <5, max ≤20 EU/glove
- Particles: typical 800, max ≤1,500 at >0.5 um/cm<sup>2</sup>
- Natural rubber latex<sup>+</sup> with low residual protein content
- Fully textured with beaded cuff for easy donning
- Hand-specific pairs



Packaged in a Class 100 Cleanroom

Description	Color	6.0	6.5	7.0	7.5	8.0	8.5	9.0	10.0	Gloves/Bag	Total/Case
Sterile Latex <sup>+</sup> Gloves, 12" Hand-Specific Pairs	Natural	56843	56844	56845	56846	56847	56848	56849	56842	20/10	200 pairs

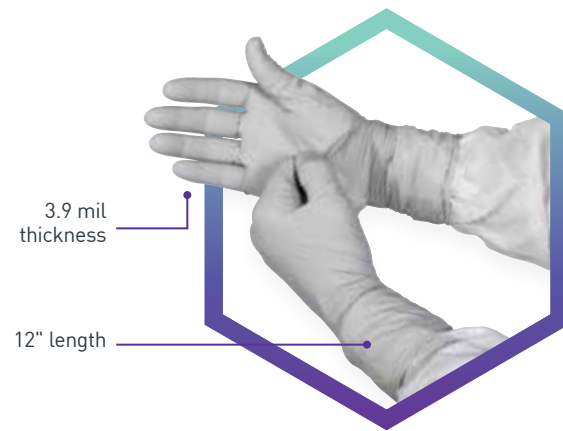
### G3 Sterile Sterling™ Nitrile Gloves



Innovation combines protection, comfort and tactile sensitivity

#### PRODUCT FEATURES

- Gamma sterilized (10<sup>-6</sup>)
- Packaged for aseptic donning (walleted and pouched in polyethylene)
- Suitable for double donning
- Low endotoxins: typical <5, max ≤20 EU/glove
- Tested for use with chemotherapy drugs, per ASTM D6978-05
- Meets USP <800> guidelines
- Meets FDA food contact requirements set forth in 21 CFR 177.2600 and Canada food handling requirements as per the Canada Food and Drugs Act and Regulations
- Particles: typical 750, max ≤1,200 at >0.5 um/cm<sup>2</sup>
- Not made with natural rubber latex
- Textured fingertips with beaded cuff for easy donning
- Hand-specific pairs
- Static dissipative in use



Packaged in a Class 100 Cleanroom

Description	Color	6.0	6.5	7.0	7.5	8.0	8.5	9.0	10.0	Gloves/Bag	Total/Case
Sterile Sterling™ Nitrile Gloves, 12" Hand-Specific Pairs	Sterling	11821	11822	11823	11824	11825	11826	11827	11828	30/10	300 pairs

Recyclable with RightCycle by Kimberly-Clark Professional®



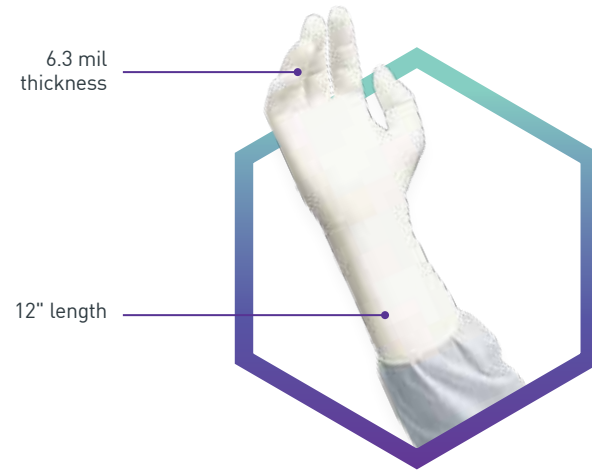
## G3 White Nitrile Gloves



Highest personal and process protection in the critical (G3) glove range

### PRODUCT FEATURES

- Ambidextrous with textured fingertips
- Strong, consistent grip
- Beaded cuff for easy donning
- Particles: typical 600, max ≤950 at >0.5 um/cm<sup>2</sup>
- Tested for use with chemotherapy drugs, per ASTM D6978-05
- Meets USP <800> guidelines
- Not made with natural rubber latex
- Static dissipative in use



Packaged in a Class 100 Cleanroom

Description	Color	XS	S	M	L	L+	XL	2XL	Gloves/Bag	Bags/Case	Total/Case
G3 White Nitrile Gloves, 12" Ambi	White	56880	56881	56882	56883	56884	56886	—	100/10	—	1,000



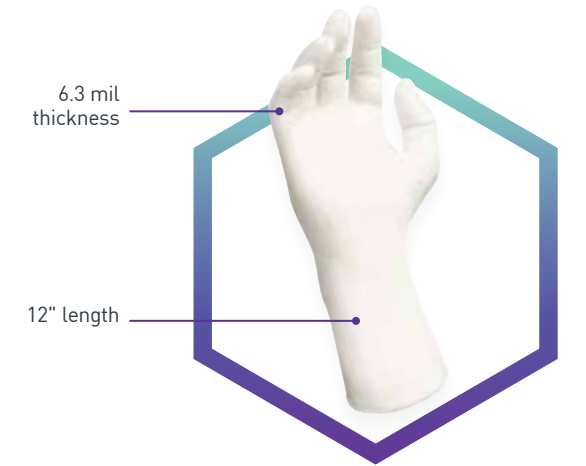
## G3 NXT™ Nitrile Gloves



Provides great personal and process protection with ability to double don

### PRODUCT FEATURES

- Ambidextrous with textured fingertips
- Beaded cuff for easy donning
- Particles: typical 650, max ≤950 at >0.5 um/cm<sup>2</sup>
- Tested for use with chemotherapy drugs, per ASTM D6978-05
- Meets USP <800> guidelines
- Meets FDA food contact requirements set forth in 21 CFR 177.2600 and Canada food handling requirements as per the Canada Food and Drugs Act and Regulations
- Not made with natural rubber latex
- Static dissipative in use



Packaged in a Class 100 Cleanroom

Description	Color	XS	S	M	L	L+	XL	2XL	Gloves/Bag	Bags/Case	Total/Case
G3 NXT™ Nitrile Gloves, 12" Ambi	White	62990	62991	62992	62993	62995	62994	—	100/10	—	1,000

## G3 Sapphire Nitrile Gloves



Color differentiation for your critical cleanroom needs

### PRODUCT FEATURES

- Ambidextrous with textured fingertips
- Strong, consistent grip
- Beaded cuff for easy donning
- Particles: max ≤950 at >0.5 um/cm<sup>2</sup>
- Not made with natural rubber latex
- Static dissipative in use



Description	Color	XS	S	M	L	L+	XL	2XL	Gloves/Bag	Bags/Case	Total/Case
G3 White Nitrile Gloves, 11.6" Ambi	Sapphire blue	55875	55876	55877	55878	—	55879	—	100/10	—	1,000

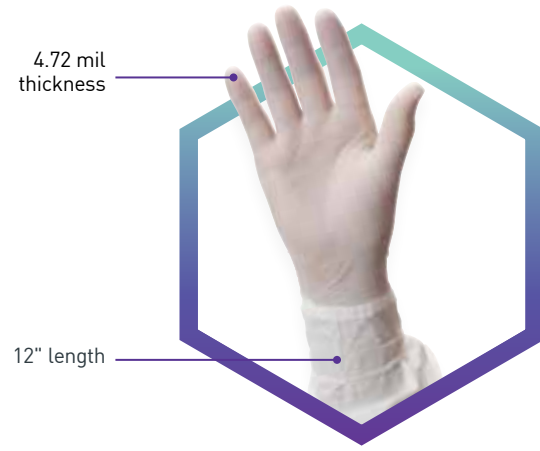


### G3 EvT Prime™ Nitrile Gloves



#### PRODUCT FEATURES

- Low particles and extractables – cleaned to meet the needs of a critical cleanroom environment
- Not made with natural rubber latex
- Textured, tacky and provides a good grip
- Ambidextrous



Packaged in a Class 100 Cleanroom

Description	Color	XS	S	M	L	L+	XL	2XL	Gloves/Bag	Bags/Case	Total/Case
G3 EvT Prime™ Nitrile gloves, 12" Ambi	White	62005	62006	62007	62008	—	62009	—	100	6 (XS-L) 5 (XL-2XL)	1,000

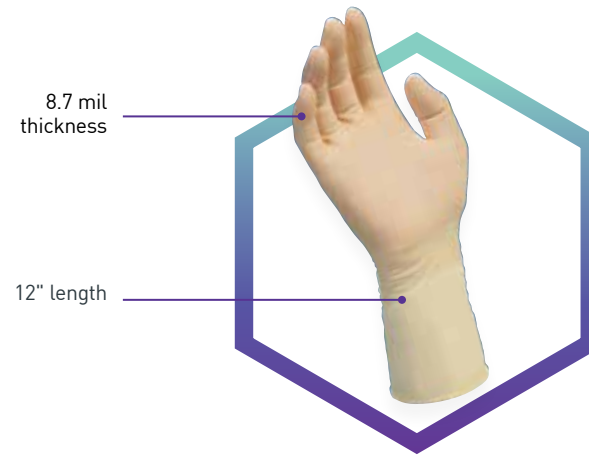
### G3 Latex† Gloves



Provides comfort, dexterity and maximum flexibility

#### PRODUCT FEATURES

- Natural rubber latex† with low residual protein content
- Textured palms and fingertips
- Beaded cuff for easy donning
- Particles: typical 700, max ≤1,500 at >0.5 um/cm²



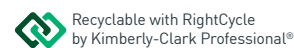
Packaged in a Class 100 Cleanroom

Description	Color	XS	S	M	L	L+	XL	2XL	Gloves/Bag	Bags/Case	Total/Case
G3 Latex† Gloves, 12" Ambi	Natural	—	56813	56814	56815	—	56816	—	100/10	—	1,000

Description	Color	6.0	6.5	7.0	7.5	8.0	8.5	9.0	10.0	Gloves/Bag	Total/Case
G3 Latex† Gloves, 12" Hand-Specific Bulk Packed	Natural	56827	56828	56829	56830	56831	56832	56833	56825	50/4	200 pairs

† CAUTION: This product contains natural rubber latex which may cause allergic reactions.

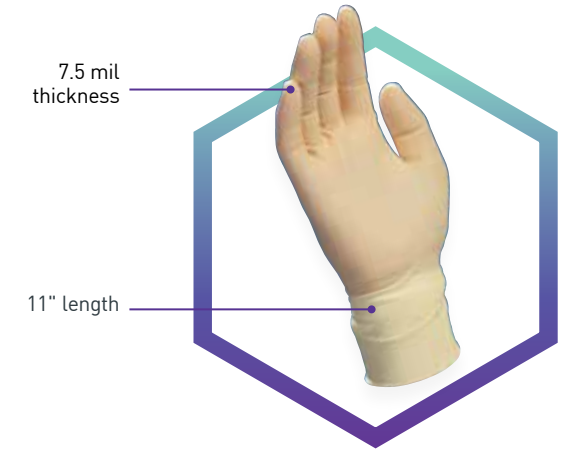


### G5 Comfort Latex† Gloves



#### PRODUCT FEATURES

- Natural rubber
- Powder free
- Ambidextrous
- Textured finished fingertips
- Beaded cuff
- Not made with silicone
- For cleanroom/Industrial use only



Packaged in a Class 100 Cleanroom

Description	Color	XS	S	M	L	L+	XL	2XL	Gloves/Bag	Total/Case
G5 Comfort Latex† Gloves, 11" Ambi	Clear	—	57708	57709	57710	—	57711	57712	100/10	1,000

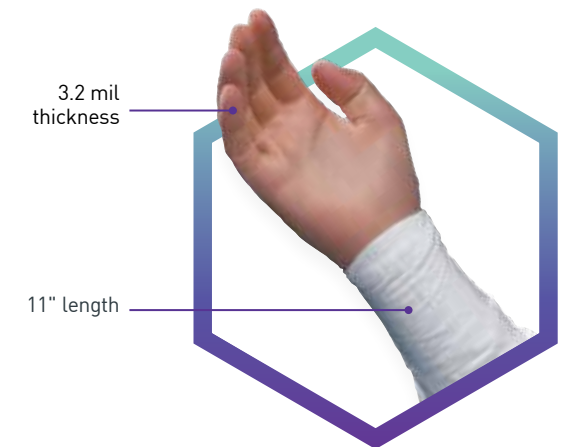
### G5 Vinyl Co-Polymer Gloves



Value-priced gloves for static-sensitive environments

#### PRODUCT FEATURES

- Ambidextrous with smooth fingertips
- Beaded cuff for easy donning
- Static dissipative in use



Packaged in a Class 100 Cleanroom

Description	Color	XS	S	M	L	L+	XL	Gloves/Bag	Total/Case
G5 Vinyl Co-Polymer Gloves, 11" Ambi	Clear	—	61001	61002	61003	—	61004	100/10	1,000

† CAUTION: This product contains natural rubber latex which may cause allergic reactions.





## Purple Nitrile™ Exam Gloves — The Original Purple Nitrile™ Exam Glove



Maximum protection for higher-risk procedures

### ▶ PRODUCT FEATURES

- Ambidextrous with textured fingertips
- Beaded cuff for easy donning
- Powder-free
- FDA cleared for use with chemotherapy drugs (*non-sterile only*)
- Tested for use with chemotherapy drugs per ASTM D6978-05
- Meets USP <800> guidelines
- Purple Nitrile-Xtra™ 12" Gloves meet NFPA standard 1999:2013 for protecting EMS workers against liquid-borne pathogens
- Not made with natural rubber latex
- Static dissipative in use



Description	Color	XS	S	M	L	XL	2XL	Gloves/Box	Total/Case
Purple Nitrile-Xtra™ Exam Gloves, 12" Ambi	Purple	55090	50601	50602	50603	50604	—	50/10	500
Purple Nitrile™ Exam Gloves, 9.5" Ambi	Purple	55080	55081	55082	55083	55084	—	100/10 XL = 90/10	1,000 XL = 900

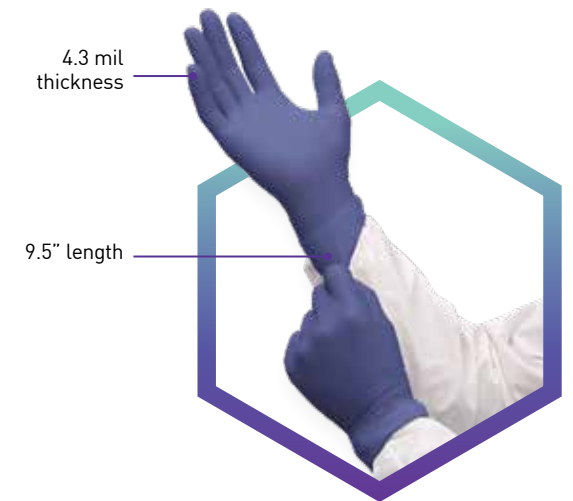


## Vista™ Nitrile Exam Gloves



### ▶ PRODUCT FEATURES

- Ambidextrous with textured fingertips
- Beaded cuff for easy donning
- Powder-free
- Tested for use with chemotherapy drugs per ASTM D6978-05
- Meets USP <800> guidelines
- Meets FDA food contact requirements set forth in 21 CFR 177.2600 and Canada food handling requirements as per the Canada Food and Drugs Act and Regulations
- Not made with natural rubber latex
- Static dissipative in use



Description	Color	XS	S	M	L	XL	2XL	Gloves/Box	Total/Case
Vista™ Nitrile Exam Gloves, 9.5" Ambi	Dark blue	62825	62826	62827	62828	62829	—	200/10 XL = 180/10	2,000 1,800

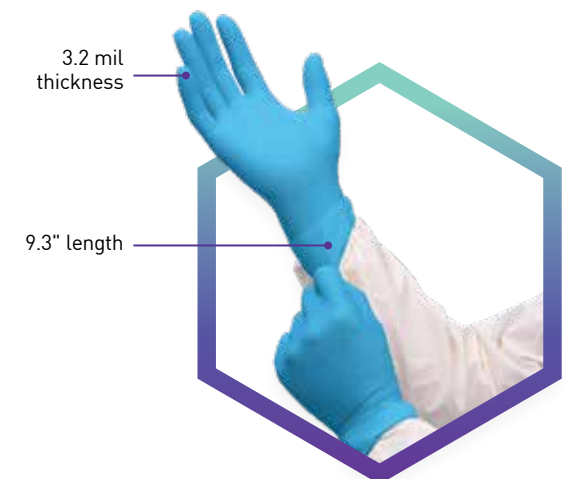


## Element™ Nitrile Exam Gloves



### ▶ PRODUCT FEATURES

- Ambidextrous with textured fingertips
- Beaded cuff for easy donning
- Powder-free
- Meets FDA food contact requirements set forth in 21 CFR 177.2600 and Canada food handling requirements as per the Canada Food and Drugs Act and Regulations
- Not made with natural rubber latex
- Static dissipative in use



Description	Color	XS	S	M	L	XL	2XL	Gloves/Box	Total/Case
Element™ Nitrile Exam Gloves, 9.3" Ambi	Blue	62870	62871	62872	62873	62874	—	250/10 XL = 230/10	2,500 2,300



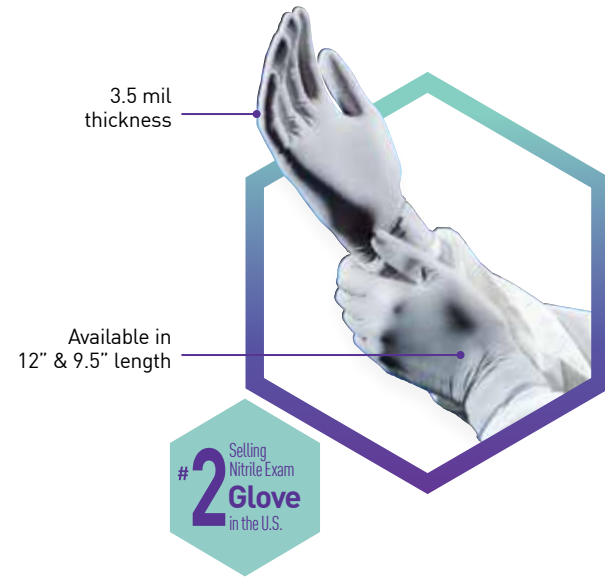
## Sterling™ Nitrile Exam Gloves

AQL 1.5

Provides the protection of nitrile with the sensitivity of latex for everyday use

### PRODUCT FEATURES

- Ambidextrous with textured fingertips
- Beaded cuff for easy donning
- Powder-free
- FDA cleared for use with chemotherapy drugs (*non-sterile only*)
- Tested for use with chemotherapy drugs per ASTM D6978-05
- Meets USP <800> guidelines
- Meets FDA food contact requirements set forth in 21 CFR 177.2600 and Canada food handling requirements as per the Canada Food and Drugs Act and Regulations
- Sterling Nitrile-Xtra™ 12" Gloves meet NFPA standard 1999:2013 for protecting EMS workers against liquid-borne pathogens
- Not made with natural rubber latex
- Static dissipative in use



Description	Color	XS	S	M	L	XL	2XL	Gloves/Box	Total/Case
Sterling Nitrile-Xtra™ Exam Gloves, 12" Ambi	Sterling	53137	53138	53139	53140	53141	—	100/10	1,000
Sterling™ Nitrile Exam Gloves, 9.5" Ambi	Sterling	50705	50706	50707	50708	50709	—	200/10 XL = 170/10	2,000 XL = 1,700



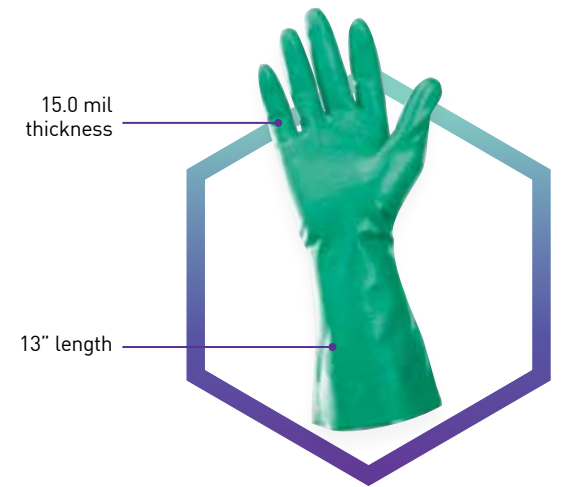
Recyclable with RightCycle by Kimberly-Clark Professional®

## KleenGuard™ G80 Nitrile Chemical-Resistant Gloves

AQL 6.5

### PRODUCT FEATURES

- Cotton flock lined for added comfort
- Textured fingertips enhance grip
- Meets EN374-374-1:2016 standard
- Meets FDA food contact requirements set forth in 21 CFR 177.2600 and Canada food handling requirements as per the Canada Food and Drugs Act and Regulations



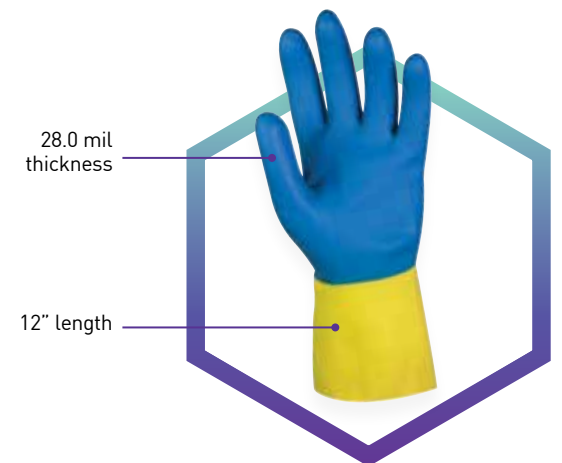
Description	Color	6 (XS)	7 (S)	8 (M)	9 (L)	10 (XL)	11 (2XL)	Gloves/Box	Total/Case
G80 Nitrile Chemical-Resistant Gloves, 13" Ambi	Green	—	94445	94446	94447	94448	94449	12 pairs/5	60 pairs

## KleenGuard™ G80 Neoprene/Latex† Chemical-Resistant Gloves

AQL 6.5

### PRODUCT FEATURES

- Palm strengthened for extra protection
- Cotton flock lining
- Anti-slip pattern on fingers for good wet or dry grip
- Meets EN 374-AKL standard
- Touchscreen compatible



Description	Color	6 (XS)	7 (S)	8 (M)	9 (L)	10 (XL)	11 (2XL)	Gloves/Box	Total/Case
G80 Neoprene/Latex† Chemical-Resistant Gloves, 12" Ambi	Blue & Yellow	—	38741	38742	38743	38744	—	12 pairs/5	60 pairs

† CAUTION: This product contains natural rubber latex which may cause allergic reactions.



## FACIAL PROTECTION

Our solutions help keep contaminants from getting in or out, providing seamless protection for your people and process and the assurance to do your best work.

As a global leader in PPE and wiping solutions for labs and cleanrooms, we offer an array of options that work together to meet your mask, respirator and other PPE needs.





### WHICH PRODUCT IS BEST FOR YOU?

These charts will help you determine the best cleanroom and lab masks for use in your environment.

#### SYMBOLS KEY

- Sterile
- Double Bagged with Case Liner
- Recommended for ISO Class 3 or higher cleanroom
- Recommended for ISO Class 5 or higher cleanroom
- Recommended for ISO Class 6 or higher cleanroom
- Recommended for ISO Class 7 or higher cleanroom
- Look for this symbol to see which products are eligible for recycling

### Kimtech™ Cleanroom Masks

Category	ISO <sup>++</sup>	Suggested use	Performance		
			Best	Better	Good
M3 Sterile		Pharmaceutical/Biotech	●		
M3 Non-Sterile		Semiconductor/Disk Drive/Data Storage/Integrated Circuits	●		
M5 Non-Sterile		Biotech/Medical Device/Electronics/Telecommunications		●	
M6 Non-Sterile		Semiconductor/Disk Drive/Data Storage/Integrated Circuits		●	
M7 Non-Sterile		Semiconductor/Disk Drive/Data Storage/Integrated Circuits			●

### 3 Steps in Selecting a Face Mask

- 1 Identify the work environment
- 2 Select the style
- 3 Determine the attachment

### Simple Donning Steps

- 1 Select your mask
- 2 Pleats point down
- 3 Shiny side out
- 4 Adjust the head attachment
- 5 Pinch the nose wire around the bridge of the nose
- 6 Proceed to your work

### TOP CONTAMINATION SOURCES:

Skin flakes, oils, perspiration and hair can all contribute to cleanroom contamination.<sup>6</sup>



<sup>6</sup> "The Contamination Risks Posed by Laundered Cleanroom Apparel," Kimberly-Clark Professional white paper, 2014

**M3 Sterile Face Masks**



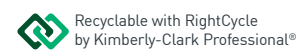
**PRODUCT FEATURES**

- Fractured polyethylene film outer layer
- Bicomponent fabric inner facing provides comfort and protects filter media
- Individually wrapped
- Individually identified with lot number and expiration date



Code	Description	Color	Style	Units/Bag <sup>9</sup>	Bags/Case	Total/Case
62467	M3 Certified Sterile Pleat-Style Face Mask	White	7" Soft ties	20	10	200
62470	M3 Certified Sterile Pleat-Style Face Mask	White	7" Knitted earloops	20	10	200
62494	M3 Certified Sterile Pleat-Style Face Mask	White	9" Soft ties	20	10	200
62483	M3 Certified Sterile Pouch-Style Face Mask	White	Individually packaged with two knitted headbands	20	10	200

<sup>8</sup> <http://www.lung.org/about-us/blog/2016/05/sneeze-versus-cough.html>  
<sup>9</sup> Individually packaged



**M3 Non-Sterile Face Masks**



**PRODUCT FEATURES**

- Low-linting polyethylene film outer layer
- Bicomponent fabric inner facing provides comfort
- Ties and ear loops
- Low-lint polyethylene film outer layer
- Silicone free for reduced risk of toxic reactions
- Elastic not made with natural rubber latex
- Manufactured in ISO 9001 registered facilities



Code	Description	Color	Style	Units/Bag	Bags/Case	Total/Case
62451	M3 Pleat-style Face Mask	White	9" Knitted earloops	50	10	500
62452	M3 Pleat-style Face Masks	White	9" Soft ties	50	10	500
62465	M3 Pleat-Style Face Mask	White	7" Knitted earloops	50	10	500
62466	M3 Pleat-Style Face Mask	White	7" Soft ties	50	10	500
62484	M3 Pouch-Style Face Mask	White	2 Knitted headbands	50	6	300

Individually packaged





**M5 Face Masks**



**PRODUCT FEATURES**

- Three-layer design
- Polyester/cellulose inner/outer facing



Code	Description	Color	Style	Units/Bag <sup>9</sup>	Bags/Case	Total/Case
62692	M5 Pleat-Style Face Mask	Blue	7" Earloops	50	10	500
62742	M5 Pleat-Style Face Mask	Blue	7" Soft ties	50	6	300

**M6 Face Masks**



**PRODUCT FEATURES**

- Bicomponent fabric inner facing provides comfort
- Two-layer design



Code	Description	Color	Style	Units/Bag <sup>9</sup>	Bags/Case	Total/Case
62477	M6 Cleanroom Face Mask	White	7" Knitted earloops	50	10	500

**M7 Face Veils**



**PRODUCT FEATURES**

- Provides exceptional breathability
- Constructed of low-linting apertured polyethylene film
- Available with knitted headband or snaps for easy face adjustment
- 13" wide & 15" long



Code	Description	Color	Style	Units/Bag <sup>9</sup>	Bags/Case	Total/Case
62751	M7 Face Veil	White	Snaps	50	3	150
62757	M7 Face Veil	White	Knitted headbands	50	3	150

**Kimberly-Clark Professional™ Visor Face Shield**

**PRODUCT FEATURES**

- Disposable full-length face shield to help protect the face and eyes
- Comfortable foam headband and elastic straps
- Compatible with eyewear and/or safety glasses
- Anti-fog, clear shield, packaged to prevent scratches
- Not for medical use



Code	Description	Color	Coating	Shields/Carton	Cartons/Case
54040	Face Shield with Full-Length Visor	Clear	Anti-fog	40	1



**NIOSH**  
 approved as N95  
 particulate filter  
 respirator  
 TC84A-9042

 **N95 Pouch Respirator**

**PRODUCT FEATURES**

- Pouch design with a large breathing chamber for added comfort
- Consistent seal to ensure proper fit
- Comfort fit headband
- Bendable nosepiece
- Not for medical use
- NIOSH approved and TAA-compliant, the Kimtech™ N95 Pouch Respirator is made in the USA and is the first respirator created for the Kimtech™ Brand



Code	Description	Color	Style	Units/Bag <sup>9</sup>	Bags/Case	Total/Case
53358	N95 Pouch Respirator (Regular)	White	Comfort fit headband (blue strap)	50	6	300
54066	N95 Pouch Respirator (Small)	White	Comfort fit headband (blue strap)	50	6	300





## WIPERS

When it comes to precision cleaning in a scientific environment, you need wiping products you can trust. Our innovative wiping solutions provide the assurance you need to do your best work while protecting critical environments and processes.





**INDUSTRY LEADER**  
for over **70** years

### The industry standard

Over 70 years ago, Kimberly-Clark Professional created Kimwipes® Wipers, the first delicate-task wiper for lab environments. It remains No. 1 today. From the industry standard for labs and research facilities to sterile pre-saturated cleanroom wipers, the Kimtech™ Brand continues to deliver high-performance wiping solutions. These, combined with our head-to-toe PPE, deliver seamless protection when and where it counts.

#### SYMBOLS KEY

- Sterile
- Double bagged with case liner
- Recommended for ISO Class 4 or higher cleanroom
- Recommended for ISO Class 5 or higher cleanroom
- Product complies with the Trade Agreements Act
- Look for this symbol to see which products are eligible for recycling

- FSC® Certified
- Meets EPA guidelines for minimum post-consumer waste content

Can be aerobically composted in municipal or industrial facilities in the United States and Canada by ASTM D6868-11. Check with your waste hauler to ensure your application and their composting process are compatible.

### Kimtech Pure™ Non-Sterile W4 Wipers

ISO 4 DB

#### PRODUCT FEATURES

- 100% polypropylene
- Thermally bonded; no glues or binders
- Acid-, base- and solvent-resistant
- Straight, clean, knife-cut edges to minimize lint
- Pre-saturated with 70% isopropyl alcohol/ 30% deionized water
- Recommended for surface wiping in ISO Class 4 or higher cleanroom environments
- Dry wipers are great for absorbency and cleaning critical surfaces and parts

Available in dry and pre-saturated options



### Kimtech Pure™ W4 Sterile Pre-Saturated Wipers

ISO 4 S DB

#### PRODUCT FEATURES

- 100% polypropylene with 70% isopropyl alcohol / 30% deionized water
- Thermally bonded; no glues or binders
- Acid-, base- and solvent-resistant
- Straight, clean, knife-cut edges minimize lint
- Ideal one-step application of alcohol to critical surfaces



#### Kimtech Pure™ W4 Wipers

	Code	Description	Format	Color	Size (WxL) in / cm	Sheets/Unit	Units/Case
	33390	Dry	Flat/Anti-stat Dbl bag	○	9" x 9" 22.9cm x 22.9cm	100	5
	33330	Dry	Flat/Anti-stat Dbl bag	○	12" x 12" 30.5cm x 30.5cm	100	5
	06070	Pre-saturated Alcohol Wipers	Resealable pouch/ Anti-stat Liner bag	○	9" x 11" 22.9cm x 27.9cm	40	10
	76490	Sterile Pre-saturated Alcohol Wipers	Resealable pouch/ Anti-stat Liner bag	○	9" x 11" 22.9cm x 27.9cm	40	10

Technology: Meltblown / Material: Polypropylene

Recyclable with RightCycle by Kimberly-Clark Professional®





## Kimtech Pure™ W5 Wipers



### ▶ PRODUCT FEATURES

- 50% rayon/ 50% polyester spunlace blend
- Cloth-like feel
- No binders or surfactants, resulting in low extractables
- Excellent absorption efficiency and capacity
- High liquid absorbency rate
- Great for cleaning critical surfaces and parts

Excellent absorption efficiency and capacity



	Code	Format	Color	Size (WxL) in / cm	Sheets/Unit	Units/Case
	06179	Flat/Anti-stat Dbl bag		9" x 9" 22.9cm x 22.9cm	100	5

**Technology:** Spunbond / **Material:** Polyester/Rayon Spunlace



## Kimtech Science™ Kimwipes® Delicate Task Wipes



The industry standard for labs and research

When it comes to precision cleaning in a lab or research environment, you need wiping products you can trust. The Kimtech™ Brand's innovative wiping solutions provide the assurance you need to do your best work while protecting critical environments and processes.

The industry standard for labs and research. Introduced over 70 years ago, Kimtech Science™ Kimwipes® Wipers were the first delicate-task wiper for laboratories and since then have been the market leader for wiping surfaces, parts, instruments and cleaning lenses. Other products have tried to imitate, but have never matched the original. Don't put your delicate processes at risk.

### ▶ PRODUCT FEATURES

- Ideal for delicate task wiping and cleaning of instruments, lenses, surfaces, parts, and for absorbing liquids
- Gentle texture
- Low lint and low extractables
- Available in 2-ply and 3-ply for increased absorbency



	Code	Format	Color	Material	Size (WxL) in / cm	Sheets/Unit	Units/Case	Delivery System
	34120	Pop-Up™ Box	○	1-ply tissue	8.2" x 4.4" 20.8cm x 11.2cm	286	30	Box
	34155	Pop-Up™ Box	○	1-ply tissue	8.2" x 4.4" 20.8cm x 11.2cm	286	60	Box
	34133	Pop-Up™ Box	○	1-ply tissue	12.3" x 11.22" 31.2cm x 28.5cm	198	15	Box
	34256	Pop-Up™ Box	○	1-ply tissue	16.4" x 14.43" 41.7cm x 36.7cm	144	15	Box
	34705	Pop-Up™ Box	○	2-ply tissue	12.3" x 11.22" 31.2cm x 28.5cm	120	15	Box
	34721	Pop-Up™ Box	○	2-ply tissue	16.4" x 14.43" 41.7cm x 36.7cm	92	15	Box
	34743	Pop-Up™ Box	○	3-ply tissue	12.3" x 11.22" 31.2cm x 28.5cm	100	15	Box

Technology: LDC

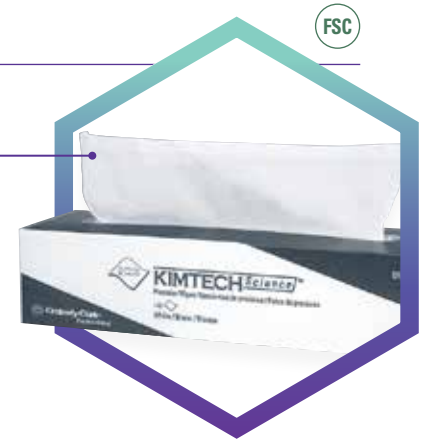
## Kimtech Science™ Precision Wipes



### ▶ PRODUCT FEATURES

- A value-conscious alternative that offers reliable wiping performance for delicate tasks
- Ideal for delicate task wiping and cleaning of instruments, lenses, surfaces, parts and for absorbing liquids
- Available in 1-ply or 2-ply
- Low lint and low extractables

One-at-a-time dispensing



	Code	Format	Color	Material	Size (WxL) in / cm	Sheets/Unit	Units/Case	Delivery System
	05511	Pop-Up™ Box	○	1-ply tissue	8.2" x 4.4" 20.8cm x 11cm	286	60	Box
	75512	Pop-Up™ Box	○	1-ply tissue	12.3" x 11.22" 31.2cm x 28.5cm	198	15	Box
	05514	Pop-Up™ Box	○	1-ply tissue	16.4" x 14.43" 41.7cm x 36.7cm	144	15	Box
	05517	Pop-Up™ Box	○	2-ply tissue	16.4" x 14.43" 41.7cm x 36.7cm	92	15	Box

Technology: LDC

## Kimtech Prep™ Scottpure™ Wipes

### ▶ PRODUCT FEATURES

- Absorbent, low-lint polyester/rayon (spunlace material) has low extractables
- Cloth-like wipers are acid-, base- and solvent -resistant
- Box format helps protect the wipers until ready for use



	Code	Format	Color	Material	Size (WxL) in / cm	Sheets/Unit	Units/Case	Delivery System
	06193	Center-Pull Roll	○		7" x 7" 17.8cm x 17.8cm	225	6	09336
	06121	1/4 Fold	○		12" x 15" 30.5cm x 38.1cm	100	4	45888; 09107
	06151	Carton	○		23.3" x 12.3" 59.2cm x 31.2cm	50	8	N/A

Technology: Spunlace / Material: Polyester/Cellulosic Rayon and Polyester



## WypAll® WetTask™ Customizable Wet Wiping System

For critical tasks in healthcare and clean-manufacturing environments

### ▶ PRODUCT FEATURES

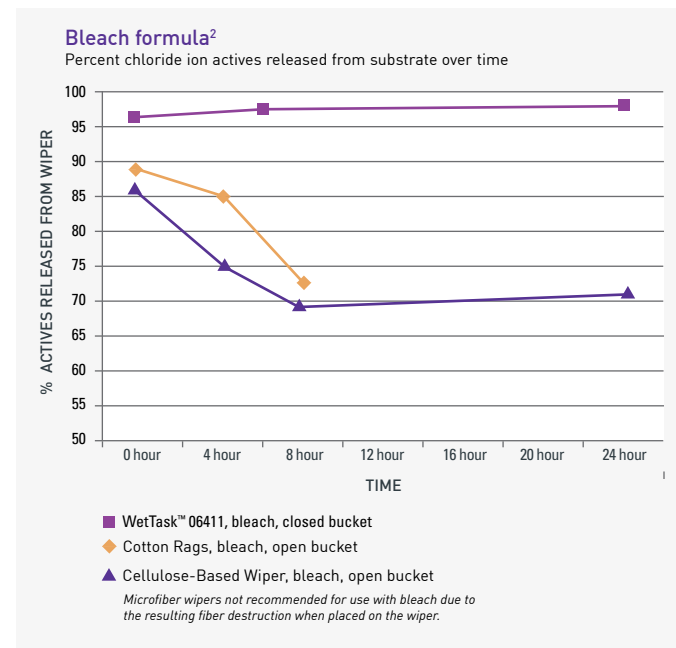
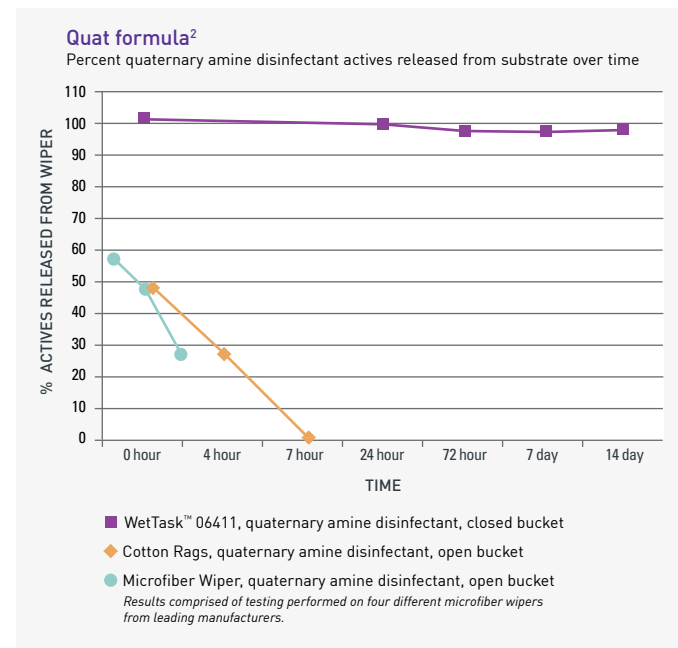
- Delivery system enables use with the chemical of your choice
- Compatible with most common disinfectants: bleach (sodium hypochlorite), hydrogen peroxide, peracetic acids and quaternary amines
- Enclosed system helps minimize risk of cross-contamination
- Reduces exposure to chemical vapors and splashes
- Clean, fresh wiper every time



	Code	Format	Color	Size (WxL) in / cm	Sheets/Unit	Units/Case	Delivery System
	06411	Center-Pull Roll	○	12" x 6" 30.5cm x 15.2cm	140	6	1 Free Bucket/Case
	06471	Center-Pull Roll	○	12" x 6" 30.5cm x 15.2cm	140	6	Refill Only
	77320	Center-Pull Roll	○	12" x 6" 30.5cm x 15.2cm	55	12	1 Free Canister/Case
	51677	Bucket	○	—	N/A	4	

Technology: Meltblown / Material: Polypropylene

## Compare WypAll® WetTask™ Customizable Wet Wiping System with other wiping materials



<sup>2</sup> Based on time-bound study of substrate-expressed antimicrobial solutions using test strips to determine Quat and Bleach PPM (parts per million) concentrations with WetTask™ 06411 versus microfiber, cloth rags or cellulose-based wipes in open bucket.

## WypAll® WetTask™ Wipers for Solvents System

For critical tasks in food and manufacturing industries

### ▶ PRODUCT FEATURES

- Delivery system enables use with the chemical of your choice
- Compatible with common solvents and chemicals; peroxide, bleach, MEK, isopropanol, acetone
- Enclosed system helps minimize risk of cross-contamination
- Reduces exposure to chemical vapors and splashes
- Clean, fresh wiper every time



	Code	Format	Color	Technology	Material	Size (WxL) in / cm	Sheets/Unit	Units/Case	Delivery System
	06001	Center-Pull Roll	○	Hydroknit®	Cellulose and Polypropylene	6" x 12" 15.2cm x 30.5cm	95	6	1 Free Bucket/Case
	06006	Center-Pull Roll	○	Hydroknit®	Cellulose and Polypropylene	9" x 15" 22.9cm x 38.1cm	275	2	09361
	09361	Bucket	●	N/A	N/A	—	1	2	Bucket for 06006
	06211	Center-Pull Roll	○	Spunlace	Spunlace	12" x 6" 30.5cm x 15.2cm	140	6	1 Free Bucket/Case
	51677	Bucket	○	N/A	N/A	—	—	4	
	53850	Center-Pull Roll	○	Spunlace	Spunlace	5.8" x 9" 14.7cm x 22.9cm	250	6	Refill Only



## WypAll® Utility Towels | L10

Light-duty, single-use towels

### ▶ PRODUCT FEATURES

- Strong and durable for general clean-up tasks
- Compostable<sup>10</sup>
- Portable dispensers enable you to keep product where you work

Meets EPA guidelines for minimum post-consumer waste content; towels 40%



	Code	Format	Color	Material	Size (WxL) in / cm	Sheets/Unit	Units/Case	Delivery System
	05320	Pop-Up™ Box	○	1-ply paper	10.25" x 9" 26cm x 22.9cm	125	18	09352; 46091
	05322	Pop-Up™ Box	○	1-ply paper	10.25" x 12" 26cm x 30.5cm	125	18	09352; 46091

## WypAll® Cleaning Towels | L30

Soft, absorbent, medium-duty towel

### ▶ PRODUCT FEATURES

- Cloth-like feel at a value price
- Soft enough for personal use<sup>11</sup>
- Compostable<sup>10</sup>
- Portable dispensers enable you to keep product where you work



	Code	Format	Color	Size (WxL) in / cm	Sheets/Unit	Units/Case	Delivery System
	03086	Pop-Up™ Box	○	10" x 10.8" 25.4cm x 27.4cm	120	10	73900
	05816	Pop-Up™ Box	○	9.8" x 16.4" 24.9cm x 41.7cm	120	6	09352
	05800	Pop-Up™ Box	○	9.8" x 16.4" 24.9cm x 41.7cm	100	8	09352
	05812	1/4 Fold	○	12" x 12.5" 30.5cm x 31.8cm	90	12	45888; 09107
	05820	Center-Pull Roll	○	14.2" x 9.8" 36.1cm x 24.9cm	300	2	09335
	05830	Center-Pull Roll	○	14.2" x 8.07" 36.1cm x 20.5cm	150	6	09335
	05843	Small Roll	○	9.4" x 11.0" 25.4cm x 27.9cm	70	24	N/A
	05841	Jumbo Roll	○	13.4" x 12.4" 34cm x 31.5cm	950	1	80596; 80579

Technology: DRC / Material: 2-ply Paper

## WypAll® Multi-Task Cleaning Cloths | X60

A versatile cloth to replace assorted rags

### ▶ PRODUCT FEATURES

- Absorbs 2 times more water and oil than rags<sup>12</sup> for faster clean-up
- Tough enough for big jobs — soft enough for face & hands<sup>11</sup>
- On average, reduces disposal waste by 78% versus rags
- Clean and consistent cloth every time
- Portable dispensers enable you to keep product where you work



	Code	Format	Color	Size (WxL) in / cm	Sheets/Unit	Units/Case	Delivery System
	34790	Pop-Up™ Box	○	16.8" x 8.34" 42.7cm x 21.1cm	126	10	73900
	54015	Brag™ Box	○	16.8" x 11.1" 42.7cm x 28.1cm	252	1	73900
	34900	Flat Sheet	○	16.8" x 12.5" 42.7cm x 31.8cm	150	6	N/A
	34865	1/4 Fold	○	12" x 12.5" 30.5cm x 31.8cm	76	12	45888; 09107
	34770	1/4 Fold	○	23" x 11" 58.4cm x 27.9cm	100	9	45888; 09107
	35421	Small Roll	○	12.2" x 19.6" 31cm x 49.8cm	130	6	N/A
	35411	Small Roll	●	12.2" x 9.8" 31cm x 24.9cm	130	12	N/A
	35431	Small Roll	●	19.6" x 12.2" 49.8cm x 31cm	130	6	N/A
	35401	Small Roll	○	12.2" x 9.8" 31cm x 24.9cm	130	12	N/A
	34955	Jumbo Roll	○	12.4" x 12.2" 31.5cm x 31cm	1100	1	80596; 80579
	34965	Jumbo Roll	●	12.4" x 12.2" 31.5cm x 31cm	1100	1	80596; 80579
	35010	Flat Sheet	○	43.75" x 20.0" 111.1cm x 50.8cm	100	3	N/A
	41083	1/4 Fold	○	12.5" x 10.0" 31.8cm x 25.4cm	70	8	

Technology: Hydroknit® / Material: Cellulose and Polypropylene

<sup>10</sup> All Kimberly-Clark Professional white L series towels can be aerobically composted in municipal or industrial facilities in the United States and Canada by ASTM D6868-11. Check with your waste hauler to ensure your application and their composting process are compatible.

<sup>11</sup> Not for use on compromised skin

<sup>12</sup> Pound for pound, based on one test lot



## Technology descriptions

Technology	Description	Recommended Wiping Solution <sup>23</sup>
<b>Hydroknit®</b>	A process known as hydroentangling that bonds cellulose fibers into polypropylene nonwoven webs through the use of high-pressure water jets that strike the webs in an agitating motion, causing the fibers to become entangled. The cellulose provides absorbency. The nonwoven provides strength.	<ul style="list-style-type: none"> <li>•WypAll® X60 Multi-Task Cleaning Cloths</li> <li>•WypAll® WetTask™ Customizable Wet Wiping System for Chemicals and Solvents (06001, 06006)</li> </ul>
<b>DRC</b>	Our DRC (Double Re-Creped) base sheet technology produces a plush, soft surface with pockets in the inner layer to enhance absorbency. The tissue provides the softness and water absorbency; the latex delivers oil absorbency and adds wet strength vs. a paper towel.	<ul style="list-style-type: none"> <li>•WypAll® L30 Heavy Cleaning Towels</li> </ul>
<b>UCTAD</b>	Uncreped Through Air Dried: manufacturing process that creates high-level absorbency and mid-level wet strength.	<ul style="list-style-type: none"> <li>•WypAll® L10 Light Cleaning Towel</li> </ul>
<b>Meltblown</b>	A nonwoven process that extrudes polymer resins to form fine filaments. Compatible with most common disinfectants containing actives ingredients such as quats, bleach, hydrogen peroxide and peracetic acids.	<ul style="list-style-type: none"> <li>•WypAll® WetTask™ Customizable Wet Wiping System for Bleach, Disinfectants and Sanitizers (06411, 06471, 77320)</li> </ul>
<b>Spunlace</b>	A process known as hydroentangling that bonds natural or synthetic fibers into nonwoven webs through the use of high-pressure water jets that strike the webs in an agitating motion, causing the fibers to become entangled. The natural or synthetic fiber provides absorbency. The nonwoven provides strength.	<ul style="list-style-type: none"> <li>•WypAll® WetTask™ Customizable Wet Wiping System for Chemicals and Solvents (06211, 53850)</li> <li>•Kimtech Prep™ Scottpure™ Wipes</li> </ul>

## Chemical compatibility



### SPRAY & WIPE

Surface is sprayed with chemical liquid and wiped with dry wiper

Chemical <sup>21</sup>	Quats (quaternary ammonium compounds)	Bleach (sodium hypochlorite)	Hydrogen Peroxide	Peracetic Acid
Meltblown WetTask™ System	✓	✓	✓	✓
Spunlace WetTask™ System	✓	✓	✓	✓

#### ✓ COMPATIBLE

Soaking the wiper in the chemical prior to use will not diminish the efficacy of the chemical. The wiper is chosen based on suitability for use with the specific type of chemistry.

#### ✗ NOT COMPATIBLE

Soaking the wiper in the chemical could result in reduction of the active ingredient and diminish the efficacy of the chemical. The chemical could have an adverse effect on the structure of the wipe causing it to breakdown prematurely in use, diminishing the performance of the wipe.

## Our promise SUSTAINABILITY

We're your responsible partner in sustainability and we're proud of our industry-leading performance in environmental impact.

- 100% of electricity used to make WypAll® L and X series wipes is offset by wind energy
- 96% of our manufacturing waste was diverted from landfills in 2020
- WypAll® L10 and L20 series wipers meet EPA guidelines for minimum post-consumer waste content<sup>24</sup>
- Wipers can reduce waste by 37%

When you choose Kimberly-Clark Professional, you're choosing a partner who not only values your business and customers, but also the world we share.



## EYEWEAR

Kimberly-Clark Professional offers safety eyewear for different work environments and a variety of different tasks. Designed with the wearer's needs and style in mind, our eyewear portfolio offers a comprehensive range of eye protection options.





### Protection for different environments and tasks

Our eyewear offerings provide workers with choices — such as different colors, sizes and vision assistance — potentially tipping the scale between protection and injury. Why take a chance on anything else? Choose our trusted brands to enhance safety and productivity in your workplace.

#### SYMBOLS KEY

Meets the optical requirements of the ANSI Z87.1 standards	Meets the impact protector requirements of the ANSI Z87.1 standards	Meets the ANSI Z87.1 requirements for liquid splash/droplet protection	Meets the ANSI Z87.1 requirements for dust protection	Meets the ANSI Z87.1 requirements for fine dust protection
Certified to meet the impact, ignition/flammability, coverage, and optical requirements of the CSA Z94.3 standards	Lenses are made of a polycarbonate material that provides 99.9% UVA/UVB/ UVC protection	Product complies with the Trade Agreements Act	Number denotes the base curve of the eye protection; a higher base curve provides more wraparound protection and peripheral vision, and can reduce the need for side shields	Look for this symbol to see which products are eligible for recycling

<sup>13</sup> National Institute of Occupational Safety and Health (NIOSH), <https://www.cdc.gov/niosh/topics/eye/default.html>

## KleenGuard™ Element™ Safety Glasses

Budget-friendly, comfortable performance

### ▶ PRODUCT FEATURES

- Lightest-weight eye protection in KleenGuard™ Brand portfolio
- Metal-free design with screw-less hinges necessary for food processing applications



Code	Lens	Coating	Frame	Pairs/Box
25627	Clear	Uncoated	Clear	12
33072	Light Blue	Uncoated	Light Blue	12
25638	Indoor/Outdoor	Uncoated	Black	12
25631	Smoke	Uncoated	Black	12

## KleenGuard™ Visio™ Safety Glasses

### ▶ PRODUCT FEATURES

- Three-point extendable temples to provide a customized fit for enhanced comfort
- Unique dual-tone frame for added style to encourage compliance
- Hard-coated lenses for scratch resistance and longer life



Code	Lens	Coating	Frame	Pairs/Box
14470	Clear	—	Silver	12
14471	Clear	Anti-Fog	Silver	12
14476	Indoor/Outdoor	—	Black	12
14472	Smoke	—	Silver	12
14473	Smoke	—	Silver/Black	12
14475	Blue Mirror	—	Black	12

## KleenGuard™ Maverick™ Safety Glasses



Stylish comfort, confident protection

Don't underestimate the power of style. Your workers need protection, but they also care how they look. Maverick™ Eye Protection, the first eyewear created for the KleenGuard™ Brand, delivers confident protection without compromising style or comfort. It's PPE that workers will want to wear. With Maverick™ Eye Protection, compliance has never looked so good.

### PRODUCT FEATURES

- Integrated **browguard** and **side shields** help the user feel confident they are protected
- Increase safety and efficiency with premium **anti-fog** and **anti-scratch** performance
- Reduce eye strain and fatigue with **anti-glare coating** (49312 only)
- **Colorful accents** make it easy to identify eye protection from a distance
- **Comfort touch points** on nose bridge and temples prevent slippage and reduce pressure



Code	Lens	Coating	Frame	Pairs/Box
49309	○ Clear	Anti-Fog	● Black	12
49312	○ Clear	Anti-Glare	● Black/Orange Tip	12
49301	○ Clear	Anti-Fog	○ Clear/Orange Tip	12
49311	● Smoke	Anti-Fog	● Black	12

## KleenGuard™ Nemesis™ Safety Glasses

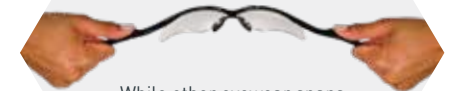


Stylish comfort; lasting protection

included  
pair to  
of damage  
orn



### COMFORT, STYLE AND DURABILITY



While other eyewear snaps under a little bit of stress, the Nemesis™ Eyewear can handle the pressure.<sup>14</sup>

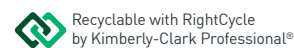
### PRODUCT FEATURES

Stylish, flexible, and lightweight design for comfort and compliance. The patented Flex-Dry™ nosepiece is designed for comfort with enhanced flexibility and integrated ridges to divert sweat. The d-coated lenses provide scratch resistance and longer life.



Code	Lens	Coating	Frame	Pairs/Box
25676	○ Clear	—	● Black	12
25679	○ Clear	Anti-Fog	● Black	12
25659	● Amber	—	● Black	12
25685	○ Indoor/Outdoor	—	● Black	12
25688	● Smoke Mirror	Mirror	● Black	12
19639	○ Light Blue	—	● Blue	12
47378	○ Clear	Anti-Fog	● Red	12
47388	○ Clear	Anti-Fog	○ Silver	12
47383	● Smoke	Anti-Fog	○ Silver	12
47384	○ Clear	Anti-Fog	● Metallic Blue	12
47387	● Smoke	Anti-Fog	● Metallic Blue	12

<sup>14</sup> Applies to Nemesis™, Nemesis™ Polarized, Nemesis™ VL, Nemesis™ CSA, Nemesis™ with Rx Inserts, and Nemesis™ Rx Readers Safety Glasses





## KleenGuard™ Nemesis™ CSA Safety Glasses



Stylish comfort; lasting protection

### PRODUCT FEATURES

- Lightweight, wraparound design that provides clear peripheral vision
- Patented Flex-Dry™ nosepiece with integrated ridges to divert sweat
- Hard-coated lenses for scratch resistance and longer life

Neck cord included with every pair to reduce risk of damage when not worn



Code	Lens	Coating	Frame	Pairs/Box
20378	○ Clear	—	● Black	12
20379	○ Clear	Anti-Fog	● Black	12
20381	● Indoor/Outdoor	—	● Black	12
20380	● Smoke Mirror	—	● Black	12

## KleenGuard™ Nemesis™ Readers Glasses



### PRODUCT FEATURES

- Stylish, nylon framed eye protection with integrated diopters for vision assistance
- Patented Flex-Dry™ nosepiece with integrated ridges to divert sweat
- Hard-coated lenses for scratch resistance and longer life

Neck cord included with every pair to reduce risk of damage when not worn



Code	Lens	Strength	Frame	Pairs/Box
28618	○ Clear	+1.0	● Black	6
28621	○ Clear	+1.5	● Black	6
28624	○ Clear	+2.0	● Black	6
28627	○ Clear	+2.5	● Black	6
28630	○ Clear	+3.0	● Black	6
22516	● Smoke	+1.5	● Black	6
22518	● Smoke	+2.0	● Black	6
22519	● Smoke	+2.5	● Black	6

Recyclable with RightCycle by Kimberly-Clark Professional®

## KleenGuard™ Unispec™ II Visitor Safety Glasses



### PRODUCT FEATURES

- 50 Pairs KleenGuard™ Unispec™ II Safety Glasses / Case
- Low-cost wraparound eye protection fits over most prescription glasses
- Metal-free design with screw-less hinges
- ANSI Z87.1+ standard for impact protection
- Polycarbonate lenses provide 99.9% UVA / UVB / UVC protection



Code	Lens	Coating	Frame	Pairs/Box
25646	○ Clear	Uncoated	○ Clear	50

## KleenGuard™ V50 OTG Safety Glasses



### PRODUCT FEATURES

- 12 pairs of KleenGuard™ OTG "Over the Glasses" Safety Glasses, designed to fit over prescription eyewear (Base curve 5)
- Black frames with clear lenses (ideal for indoor use for maximum light transmission), with anti-fog coating
- See-through side shields provide side impact protection without blocking peripheral vision
- Features a hard coating to prevent lens damage
- Meets ANSI Z87.1+ standards for high impact and polycarbonate lenses provide UVA / UVB / UVC protection



Code	Lens	Coating	Frame	Pairs/Box
20746	○ Clear	Anti-Fog	● Black	12



### KleenGuard™ Monogoggle™ 202 Goggles

Z87.1 + UV D4 D5 0

#### ▶ PRODUCT FEATURES

- Two-piece goggle frame with a separate soft, cushioning nosepiece for enhanced fit and comfort
- Unventilated design provides protection from fine dust particles
- Fits over most prescription eyeglasses

Headband buckles are located toward the rear of the goggle frame to limit interference with peripheral vision



Code	Lens	Coating	Frame	Pairs/Box
16666	○ Clear	—	● Green	36

### KleenGuard™ Monogoggle™ VPC Goggle

Z87.1 + UV D3 0

#### ▶ PRODUCT FEATURES

- Splash protection goggles in the same two-piece goggle frame as the Monogoggle™ 202 and 211, but with a larger lens for enhanced fit and comfort with larger prescription eyeglasses
- Indirect ventilation like the Monogoggle™ 211 style, but with two additional baffled ports to increase airflow and minimize condensation and fogging, while protecting from splashes
- Wider nosepiece to fit over most half-mask respirators
- Fits over most prescription eyeglasses

Headband buckles are located toward the rear of the goggle frame to limit interference with peripheral vision



Code	Lens	Coating	Frame	Pairs/Box
16361	○ Clear	Anti-Fog	● Bronze	36



## KleenGuard™ V90 Shield



### ▶ PRODUCT FEATURES

- Monogoggle™ XTR goggles integrated into a face shield to provide full eye and face protection from liquids without the hassle of primary eye protection underneath a face shield
- Curved face shield conforms to the shape of the face for added protection
- Fits over most prescription eyeglasses

Shield detaches from the goggles for a 2-in-1 solution



Code	Lens	Coating	Frame	Pairs/Box
18629	○ Clear	Anti-Fog	● Blue	6

## KleenGuard™ Monogoggle™ 211 Goggles



### ▶ PRODUCT FEATURES

- Economical splash protection with a soft, pliable frame for enhanced fit and comfort
- Button vents offer indirect ventilation while providing protection from splashes
- Fits over most prescription eyeglasses



Headband buckles are located toward the rear of the goggle frame to limit interference with peripheral vision

Code	Lens	Coating	Frame	Pairs/Box
14384	○ Clear	—	● Green	36
14387	○ Clear	Anti-Fog	● Green	36
16668	○ Clear (with Foam)	Anti-Fog	● Green	36
16669	○ Clear (Respiratory)	Anti-Fog	● Green	36

## KleenGuard™ Revolution™ OTG Goggle



### ▶ PRODUCT FEATURES

- Splash protection in a sleek, sporty design with a curved lens for enhanced field of vision
- Patented cross vent technology keeps air flowing in and moisture out to prevent fogging
- Soft, pliable frame gasket for enhanced fit and comfort
- Fits over most prescription eyeglasses



Code	Lens	Coating	Frame	Pairs/Box
14399	○ Clear	Anti-Fog	● Blue	30
14402	● Amber	Anti-Fog	● Blue	30
14401	● Smoke	Anti-Fog	● Blue	30
18483	○ Clear	Anti-Fog	● Black	30

## KleenGuard™ V80 SG34 Goggle



### ▶ PRODUCT FEATURES

- Economical splash protection with a soft, pliable frame for enhanced fit and comfort
- Button vents offer indirect ventilation while providing protection from splashes
- Fits over most prescription eyeglasses



Headband buckles are located toward the rear of the goggle frame to limit interference with peripheral vision

Code	Lens	Coating	Frame	Pairs/Box
16362	○ Clear	Hard Coated	● Green	50



**Try it. Risk-free.** Replace your current PPE or wiping products with Kimberly-Clark Professional solutions for 60 days. If you don't see a 20% cost savings, we will reimburse you the difference between the cost of your product and our product up to \$1,000.\*\*

**Take the 60-day challenge!** To learn more, contact your Kimberly-Clark Professional Sales Representative.

\*\*Guarantee extended to consuming end-user accounts with the following restrictions: Replace your current rags or laundered towels with WypAll® X Brand Wipers; replace your current wiping system with WypAll® Wiping Solutions for 60 days and see a 20% savings on chemical costs (06411, 06471, 77320); replace your DuPont™ Tyvek® 400 with KleenGuard™ Brand families A20, A40 and A45; replace your competitive economy eye protection (uncoated lenses) with KleenGuard™ Maverick™, Nemesis™, Nemesis™ CSA, or Nemesis™ VL Eye Protection; replace your 5-mil gloves with KleenGuard™ G29 Chemical Gloves. The maximum amount that Kimberly-Clark Professional will pay out under this program is \$1,000 per customer facility. Void where prohibited, taxed or restricted by law. Not responsible for lost, late, misdirected, incomplete or undeliverable submissions. Kimberly-Clark Professional reserves the right to modify or cancel this program at any time. See individual brochures for specific details and eligible codes.

» **WARNINGS: Improper use or failure to heed warnings may result in serious injury or death.**

Do not use respirators for sandblasting or to protect **against** asbestos, lead-based paint, pesticides, oil aerosols<sup>1</sup>, vapors or gases. Do not wear respirators when conditions prevent a good facial seal. It is important to fit check the respirator each time it is worn.

<sup>1</sup> Except R95 or P95

# KIMTECH™

CHOOSE KIMBERLY-CLARK PROFESSIONAL PRODUCTS FOR ALL YOUR NEEDS IN CRITICAL ENVIRONMENTS

Kimberly-Clark Professional offers you convenience, reliability and technical expertise in a single source for apparel, masks, gloves, wipers and eyewear for critical environments.

**Certified Quality Documentation:**

For Certificates of Conformance, Certificates of Analysis and Certificates of Irradiation, visit <https://www.certs.kcprofessional.com/>





# KIMTECH™

### Our Guarantee

Your total satisfaction means everything to us. If, for any reason, our products do not meet your expectations, Kimberly-Clark will reimburse you\* for your initial purchase, via FREE product, for up to \$1,000. For more information on Kimberly-Clark Professional, visit us online at [www.KCProfessional.com](http://www.KCProfessional.com).

\* Guarantee extended to consuming end-user accounts only.

Kimberly-Clark warrants that its products (1) comply with K-C's standard specifications as of the delivery date to K-C's authorized distributors/direct purchasers (2) comply with all K-C labeling representations; and (3) are manufactured in compliance with all applicable federal, state, and local laws in effect at the time and place of manufacture of the products. THIS WARRANTY IS IN LIEU OF ALL OTHER WARRANTIES, EXPRESS OR IMPLIED, INCLUDING ANY WARRANTY OF MERCHANTABILITY OR FITNESS FOR A PARTICULAR PURPOSE. K-C is not liable for any kind of special, incidental, or consequential damages. K-C's liability for breach of contract, tort or other cause of action shall not exceed the product purchase price. Purchasers and users are deemed to have accepted the above warranty and limitation of liability, and cannot change the terms by verbal agreement or by any writing not signed by K-C. To the extent required by applicable law, K-C does not limit its liability for death/injury resulting from K-C's negligence.

©/™ Trademarks of Kimberly-Clark Worldwide, Inc. or its affiliates. Marques de commerce de Kimberly-Clark Worldwide, Inc. ou de ses sociétés affiliées. The Daisy Design is a trademark of Kimberly-Clark Worldwide, Inc. Saranex™ is a registered trademark of the Dow Chemical Company. VELCRO® is a registered trademark of Velcro BVBA. The color Purple, Purple Nitrile®, Purple Nitrile-Xtra®, the color Gray and Sterling™ are registered trademarks of O&M Hayland, Inc., or one of its affiliates. SMITH & WESSON® and Magnum® are trademarks owned by Smith & Wesson Corp and used under license. ©KCVW. T745YK-04 11/22



Distributed by Fisher Scientific. Contact us today:

### In the United States

Order online: [fishersci.com](http://fishersci.com)  
Call customer service: 1-800-766-7000

### In Canada

Order online: [fishersci.ca](http://fishersci.ca)  
Call customer service: 1-800-234-7437

