

biotechne®

Why Choose Bio-Techne Antibodies?



Find What You Need

Bio-Techne is your trusted full-service partner, dedicated to collaborating with you throughout the entire discovery process. Our antibodies enable progress from benchtop research to clinical applications.

Be Confident in Your Decision

We've done the work for you. Easily find citations and customer reviews for our products. No citations or reviews? No problem. Our data image library shows application specific data to help you bypass the antibody screening process and generate data faster.

We Support You

Unsure of your results? Contact our technical service experts to access 40+ years of experience and insights. They can provide guidance to maximize antibody performance.



1,600+ KO Validated Antibodies



100+ Species



70+ Applications



240,000+ Images



200,000+ Citations



7,500+ Reviews



Customer Service



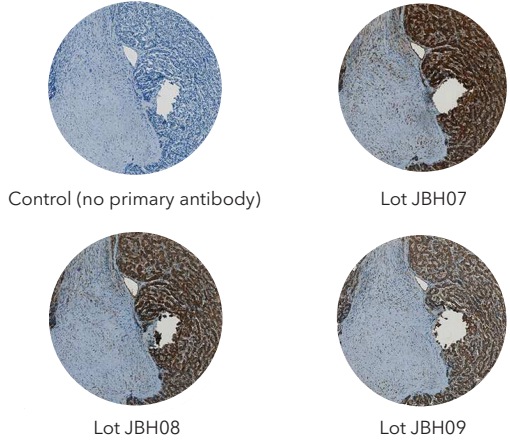
Scientific Support

Find it at [fishersci.com](https://www.fishersci.com)

 **fisher scientific**
part of Thermo Fisher Scientific

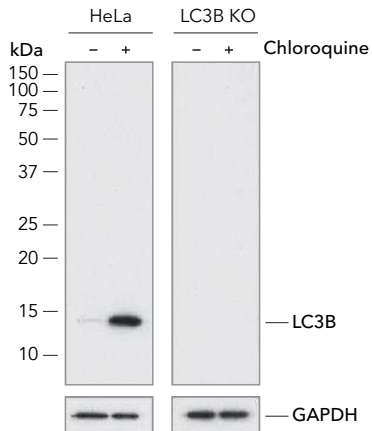
You Can Trust Us

Consistent



Immunohistochemistry. Comparison of three different lots of Lipocalin-2 Polyclonal Antibody in Human Pancreatic Cancer Tissue.

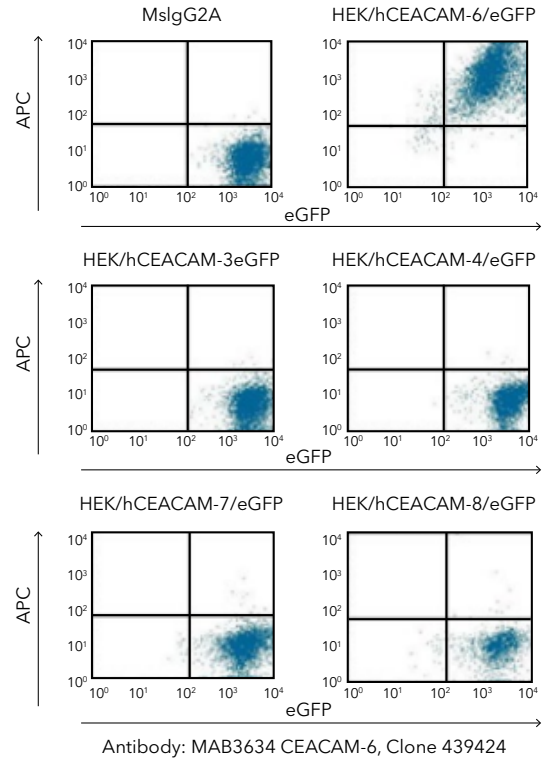
Validated



Western Blot: Rabbit Anti-LC3B Recombinant Monoclonal Antibody detects LC3B expression in chloroquine treated HeLa cells, but not in LC3B knockout cells.

Specific

Human CEACAM-6 Specificity Testing: MAB3934



Flow Cytometry. Mouse Anti-Human CEACAM-6/CD66c monoclonal antibody detects CEACAM-6/CD66b-GFP transfected HEK293 cells, but not CEACAM-3, CEACAM-4, CEACAM-7, or CEACAM-8 transfected cells.

Guarantee

We stand behind our products. All Bio-Techne antibodies are backed by a 100% Guarantee.

Distributed by Fisher Scientific. Contact us today:

In the United States

Order online: fishersci.com

Call customer service: 1-800-766-7000

