

Fisher Scientific accumet® XL

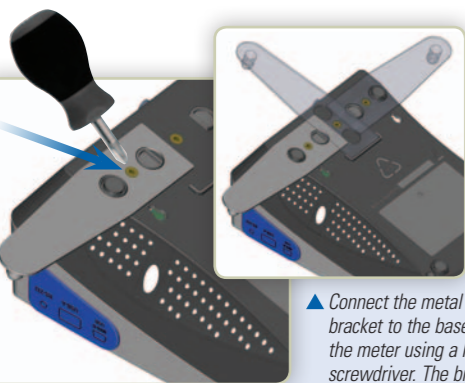
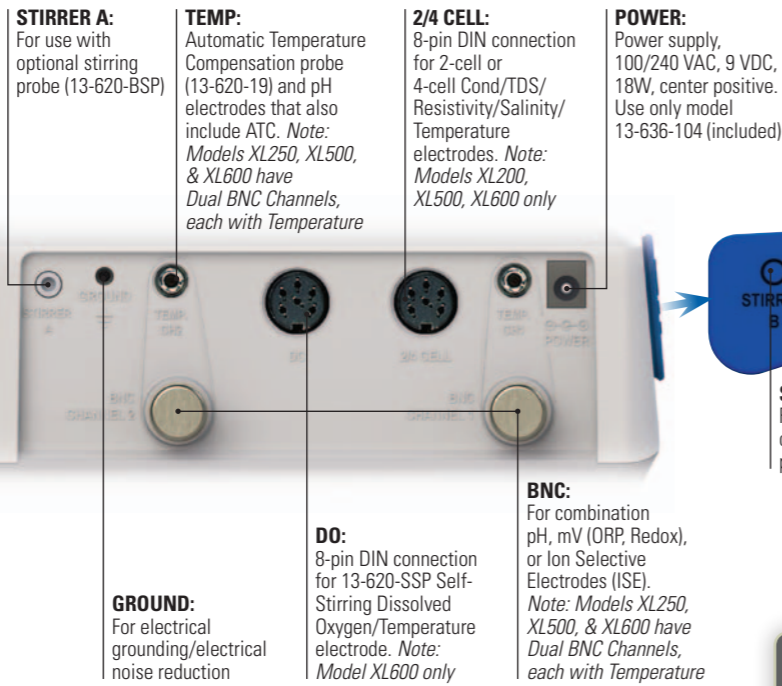
Instruction Sheet for Models • XL150 • XL200 • XL250 • XL500 • XL600



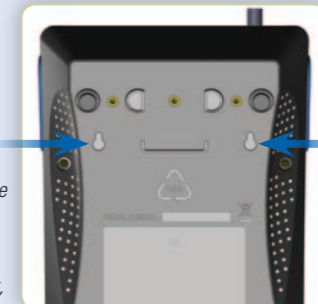
Thank you for selecting the Fisher Scientific accumet XL series benchtop meter. All models include an electrode arm with metal bracket (13-637-671), 100/240 universal power supply (13-636-104), RS-232, and USB cable. This instrument incorporates a full color touch screen which can be controlled by a finger or an optional USB mouse. Avoid damage to the display by keeping display from contact with chemicals, hot liquids, and all sharp or pointed objects. **This instruction sheet serves five models, so not all information presented here is relevant to each model.**

2 Get It Together

Rear View of XL600



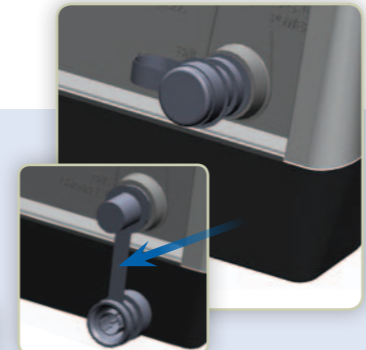
▲ Connect the metal electrode bracket to the base of the meter using a Phillips screwdriver. The bracket may be attached to the left, right, or center according to your preference.



▲ Attach the electrode arm to the bracket & tighten the wing nut. Purchase an additional arm/bracket (13-637-671) to utilize two arms in left & right positions simultaneously.

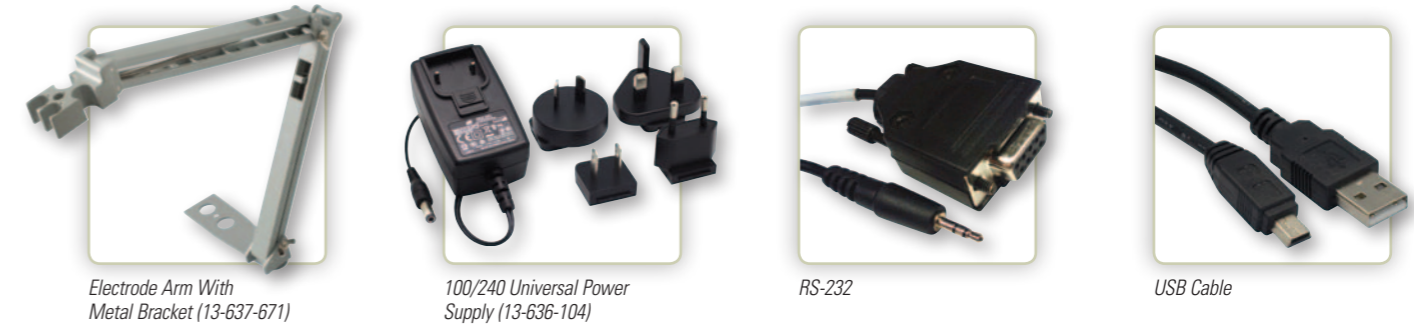


▲ Attach electrodes and output cables as required into the corresponding ports of the meter.



▲ Prior to attaching pH, ORP, or Ion electrodes, the BNC shorting cap (13-620-99) should be removed. Do not discard the shorting cap. This cap is useful for simulating a 0 mV signal and also as a protective covering when the BNC connection is not in use. A strap will retain the cap in place when an electrode is connected.

1 In The Box





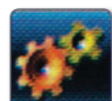





Electrode Arm With Metal Bracket (13-637-671)

100/240 Universal Power Supply (13-636-104)

RS-232

USB Cable

3 Navigation

- 
Administration: Use to create and edit user login ID profiles and passwords.
- 
Setup: Use to customize changes to the measurement parameter.
- 
System Setup: Use to configure and view system settings. These include stirrer speed, printer, touch screen calibration, date & time and brightness settings.
- 
Print: Use to print data manually from measurement mode. If you selected the "LOG DATA" option in the "Print Criteria" setup, the Print icon in the measurement mode will send data to the printer. *Available from single-channel measurement display only.*
- 
Multi Channel: Use to display measurement mode of multiple channels simultaneously. *Not available with XL150.*
- 
Single Channel: Use to display one measurement mode. *Note: Single Channel is required to access the Standardization mode, Printing function, and on-screen graphing.*
- 
Display Setup: Use to configure the display options and select input parameters.
- 
Log Data: Use to save the current measurement data manually to memory. Sample ID entry is required before data can be saved (this is available from Setup).
- 
Log View: View saved data in memory on the display.
- 
Standardization View: View standardization (calibration) data on the display.
- 
Measure: Use to resume live measurement after "Auto Read" function has been activated and the measurement is frozen. *Note: Not available with mV, BOD, OUR, or SOUR display.*
- 
Stirrer A/B: On/Off control of optional stirring probe (13-620-BSP) connected to corresponding Stirrer port A or Stirrer port B.
- 
Mode: Use to change operation modes. Also use to gain access to Administration, System Setup, About, and Internet Explorer icons.
- 
Explorer: Internet Explorer mobile browser. *Note: sound and video are not enabled.*
- 
Help: Provides screen specific help from various screens.

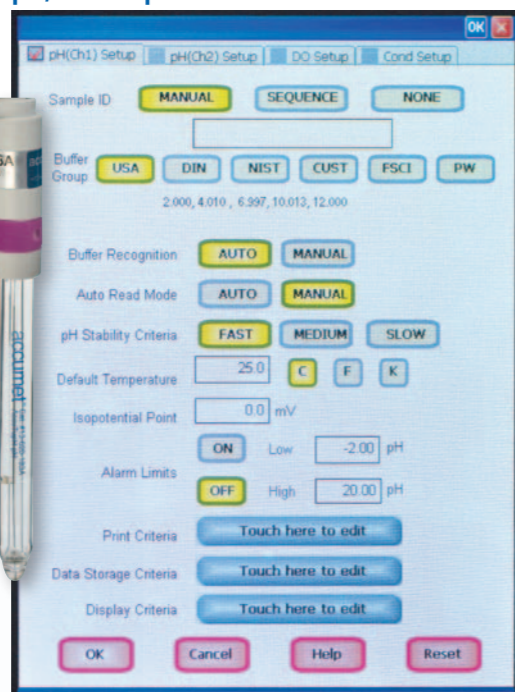
4 Setup Your Parameter

When a user presses 'Setup' located on the display, one of the four windows shown at the right will open.



For All Models

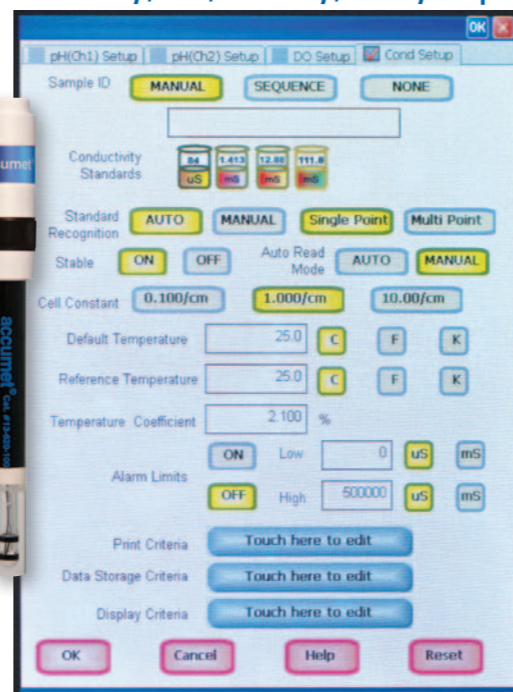
pH / mV Setup



pH Buffer Group	pH Values
USA	2.000, 4.010, 6.997, 10.013, 12.000
NIST	1.678, 4.010, 6.865, 9.184, 12.460
DIN (19267)	1.090, 3.060, 4.650, 6.790, 9.230, 12.750
FSCI (Fisher Scientific)	1.000, 3.000, 6.000, 8.000, 10.000, 13.000
PW (Pure Water)	4.10, 6.97, 9.15
CUSTOM	Any 2 - 5 values, ≥ 1.0 pH unit apart

For XL200, XL500, XL600

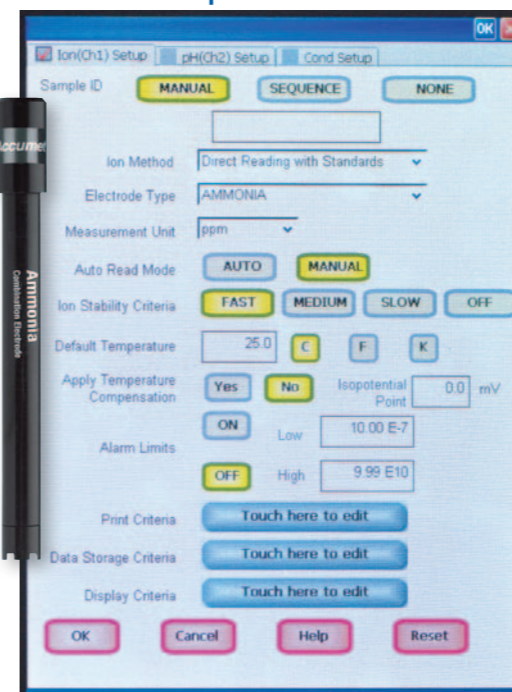
Conductivity / TDS / Resistivity / Salinity Setup



Range #	Conductivity Range	Automatic Calibration Values	
		Normalization Temperature	
		25 °C	20 °C
r 1	0.000 µS – 199.99 µS	84 µS	76 µS
r 2	200.0 µS – 1.999 mS	1.413 mS	1.278 mS
r 3	2.000 mS – 19.99 mS	12.88 mS	11.67 mS
r 4	20.00 mS – 500.0 mS	111.8 mS	102.1 mS

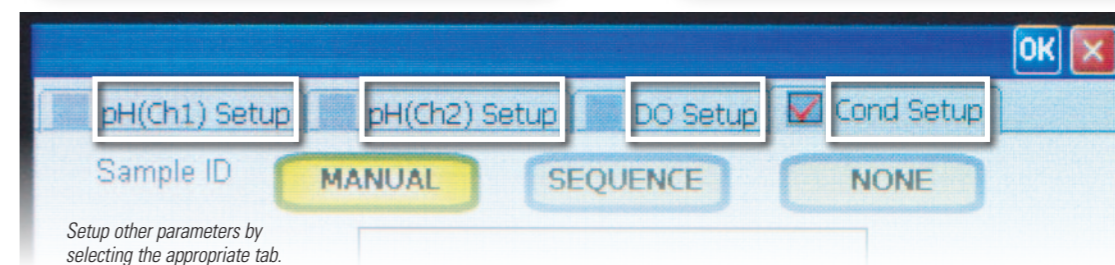
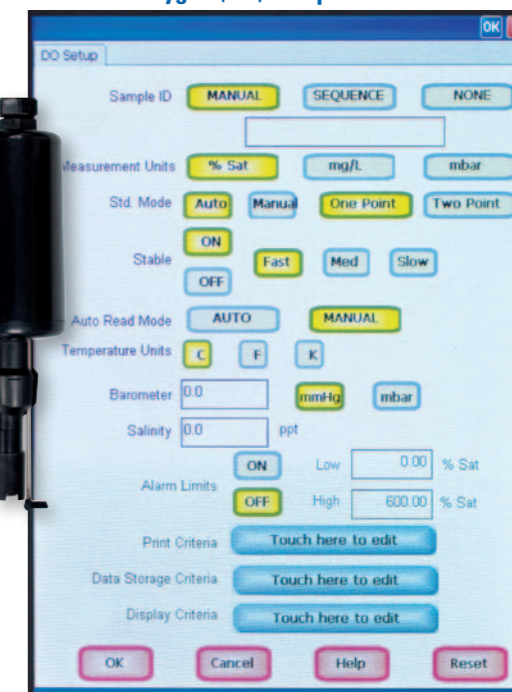
For XL250, XL500, XL600

Ion Selective Setup



For XL600 Only

Dissolved Oxygen (DO) Setup



Setup other parameters by selecting the appropriate tab.

5 Standardization (Calibration)

For best results, Standardize with one or more calibration standards prior to measurement. From single-channel display mode, press "Standardize" to begin standardization. Rinse your electrode with clean water and immerse in your first calibration standard. When the reading is stable, press "Confirm" to accept the value, and repeat with additional standards. Press "Clear" to erase all values.

Standardization Icons	
	Use Confirm to accept the standard value.
	Use Clear to erase previous standardization.
	Use Cancel to returns to measurement without accepting the standard value.
	Use Temp Std to standardize (calibrate) the temperature.

6 You Are Ready To Begin Measurement!

Visit www.fishersci.com/accumet for product updates and more!

For Customer Service:
 1-800-766-7000 (USA)
 1-800-234-7437 (Canada)
 exports@fishersci.com
 www.fishersci.com

For Technical Support:
 1-888-358-4706 (North America)
 accumet@fishersci.com



Thermo Fisher Scientific
 Fisher Scientific GmbH
 Fisher Scientific
 Fisher Scientific
 Fisher Scientific SPOL. S.R.O.
 Fisher Scientific
 Fisher Scientific
 Fisher Scientific
 Fisher Scientific GmbH
 Fisher Scientific
 Fisher Scientific
 Fisher Scientific

(Australia) +1300-735-292 thermofisher.com.au
 (Austria) 0043-800-208840 at.fishersci.com
 (Belgium) 056-260-260 be.fishersci.com
 (Canada) 1-800-234-7437 fishersci.ca
 (China) +400-881-5117 fishersci.com.cn
 (Czech Republic) +420-466-798-230 thermofisher.cz
 (Denmark) +45-70-27-99-20 fishersci.dk
 (Finland) +358-9-8027-6280 fishersci.fi
 (France) 03-88-67-53-20 fr.fishersci.com
 (Germany) 0049-2304-932-5 de.fishersci.com
 (India) +1-800-209-7001 fishersci.in
 (Ireland) +35-301-899-5854 ie.fishersci.com
 (Italy) 02-953-28-258 it.fishersci.com
 (Korea) +02-527-0300 fishersci.co.kr

Fisher Scientific
 Fisher Scientific
 Thermo Fisher Scientific
 Fisher Scientific
 Fisher Scientific
 Fisher Scientific
 Fisher Scientific
 Fisher Scientific
 Fisher Scientific
 Fisher Scientific
 Fisher Scientific
 Fisher Scientific

(Malaysia) +603-5122-8888
 (Netherlands) 020-487-70-00
 (New Zealand) +0800-933-966
 (Norway) +47-22-95-59-59
 (Portugal) 21-425-33-50
 (Singapore) +65-6873-6006
 (South East Asia) +65-6873-6006
 (Spain) 902-239-303
 (Sweden) +46-31-352-32-00
 (Switzerland) 056-618-41-11
 (United Kingdom) +01-509-231166
 (United States) 1-800-766-7000

fishersci.com.my
 nl.fishersci.com
 thermofisher.co.nz
 fishersci.no
 pt.fishersci.com
 fishersci.com.sg
 fishersci.com.sg
 es.fishersci.com
 fishersci.se
 ch.fishersci.com
 fisher.co.uk
 fishersci.com